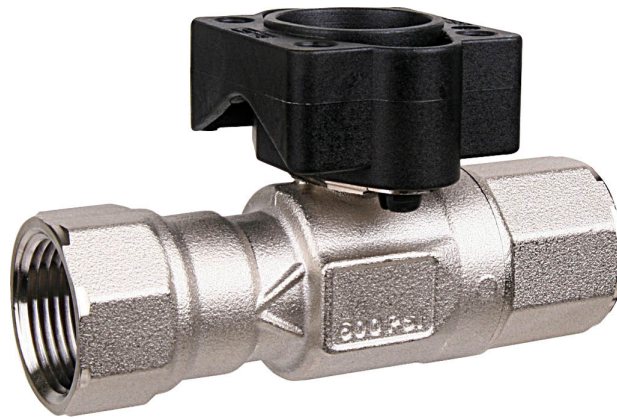


2-way, Characterized Control Valve, Stainless Steel Ball and Stem



5-year warranty

### Type overview

|             |           |
|-------------|-----------|
| <b>Type</b> | <b>DN</b> |
| B220HT290   | 20        |

### Technical data

|                           |                                   |   |                                       |
|---------------------------|-----------------------------------|---|---------------------------------------|
| <b>Functional data</b>    | Valve size [mm]                   | 0.75" [20]  |                                       |
|                           | Fluid                             | high temperature hot water/low pressure steam, up to 60% glycol |                                       |
|                           | Fluid Temp Range (water)          | 60...266°F [16...130°C]   |                                       |
|                           | Fluid Temp Range (steam)          | 250°F [120°C]   |                                       |
|                           | Body Pressure Rating              | 600 psi   |                                       |
|                           | Close-off pressure Δps            | 200 psi   |                                       |
|                           | Flow characteristic               | equal percentage  |                                       |
|                           | Pipe connection                   | Internal thread<br>NPT (female)                                 |                                       |
|                           | Servicing                         | maintenance-free  |                                       |
|                           | Max Differential Pressure (Steam) | 15 psi  |                                       |
|                           | Flow Pattern                      | 2-way   |                                       |
|                           | Leakage rate                      | 0%  |                                       |
|                           | Controllable flow range           | 75°   |                                       |
|                           | Cv                                | 2.9   |                                       |
|                           | Maximum Inlet Pressure (Steam)    | 15 psi  |                                       |
|                           | <b>Materials</b>                  | Valve body  | Nickel-plated brass (DZR) P-CuZn35Pb2 |
|                           |                                   | Stem  | stainless steel                       |
| Stem seal                 |                                   | Viton O-ring  |                                       |
| Seat                      |                                   | ETFE  |                                       |
| Characterized disc        |                                   | ETFE  |                                       |
| O-ring                    |                                   | EPDM (lubricated)   |                                       |
| Ball                      |                                   | stainless steel   |                                       |
| <b>Suitable actuators</b> | Non Fail-Safe                     | LRB(X)  |                                       |
|                           | Spring                            | LF  |                                       |

### Safety notes



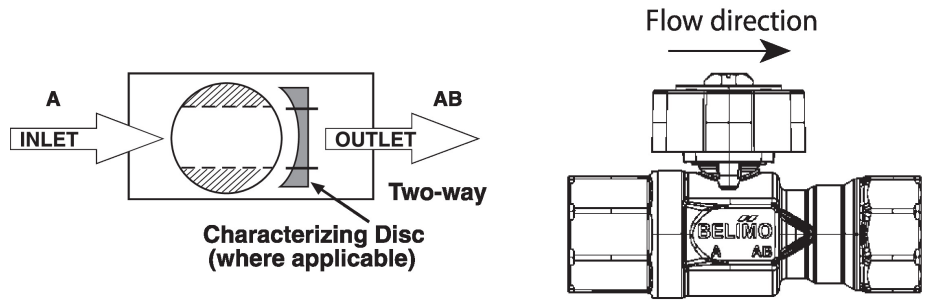
- **WARNING:** This product can expose you to lead which is known to the State of California to cause cancer and reproductive harm. For more information go to [www.p65warnings.ca.gov](http://www.p65warnings.ca.gov)

Product features

**Application** This valve is typically used in air handling units on heating or cooling coils, and fan coil unit heating or cooling coils. Some other common applications include unit ventilators, VAV box re-heat coils and bypass loops. This valve is suitable for use in a hydronic system with variable flow.

This valve is designed to fit in compact areas where on/off, floating point and modulating control is required using 24 VAC.

Flow/Mounting details



Dimensions

| Type      | DN | Weight            |
|-----------|----|-------------------|
| B220HT290 | 20 | 0.93 lb [0.42 kg] |

