

Modbus for GRUNDFOS iSOLUTIONS MONITOR

Functional profile and user manual



Modbus for GRUNDFOS iSOLUTIONS MONITOR

English (GB)

Functional profile and user manual	4
--	---

Original functional profile and user manual

Table of contents

1. General information	4
1.1 Hazard statements	4
1.2 Notes	4
2. Introduction	5
2.1 About this functional profile	5
2.2 Assumptions	5
2.3 Definitions and abbreviations	5
3. Specification	5
3.1 Modbus RTU	5
4. IO board setup	6
4.1 Termination resistor	7
5. Modbus function code overview	7
6. Modbus RTU telegram examples	8
6.1 Modbus telegram overview	8
6.2 Read holding registers, 0x03	8
6.3 Read input registers, 0x04	8
6.4 Write single register, 0x06	9
6.5 Write multiple registers, 0x10	9
7. Modbus register addresses	10
7.1 Device configuration [R/W]	10
7.2 Device status [R]	10
7.3 Control and configuration [W]	11
7.4 Status [R]	12
7.5 Data [R]	14
7.6 Reserved registers [R]	15
7.7 GiM IO board control	15
7.8 GiM IO board configuration	15
7.9 GiM IO board configuration status	16
7.10 GiM IO board event status	16
7.11 GiM IO board digital status	17
7.12 GiM IO board sensor measurements	18
7.13 GiM IO board sensors mapped to parameters	18
7.14 Generic scaling of GiM IO board analog measurements AI1, AI2 and AI3	20
8. Grundfos GO configuration of the GiM IO board	20

1. General information



Read this document before you install the product. Installation and operation must comply with local regulations and accepted codes of good practice.

1.1 Hazard statements

The symbols and hazard statements below may appear in Grundfos installation and operating instructions, safety instructions and service instructions.

**DANGER**

Indicates a hazardous situation which, if not avoided, will result in death or serious personal injury.

**WARNING**

Indicates a hazardous situation which, if not avoided, could result in death or serious personal injury.

**CAUTION**

Indicates a hazardous situation which, if not avoided, could result in minor or moderate personal injury.

The hazard statements are structured in the following way:

SIGNAL WORD**Description of the hazard**

Consequence of ignoring the warning

- Action to avoid the hazard.

1.2 Notes

The symbols and notes below may appear in Grundfos installation and operating instructions, safety instructions and service instructions.



Observe these instructions for explosion-proof products.



A blue or grey circle with a white graphical symbol indicates that an action must be taken.



A red or grey circle with a diagonal bar, possibly with a black graphical symbol, indicates that an action must not be taken or must be stopped.



If these instructions are not observed, it may result in malfunction or damage to the equipment.



Tips and advice that make the work easier.

2. Introduction

2.1 About this functional profile

This functional profile applies to the following Grundfos product:

- GRUNDFOS iSOLUTIONS MONITOR, GiM.

This specification is for BMS and SCADA integration.

2.2 Assumptions

This functional profile assumes that the reader is familiar with the commissioning and programming of Modbus devices. The reader should also have some basic knowledge of the Modbus protocol and technical specifications.

It is also assumed that an existing Modbus network with a Modbus master is present.

2.3 Definitions and abbreviations

BMS	Building Management System (Modbus)
CIM 280	3G/4G communication interface module for Grundfos Remote Management (GRM) and Grundfos iSolutions Cloud (GiC).
CIM 500/550	Ethernet communication interface module for Grundfos Remote Management (GRM) and Grundfos iSolutions Cloud (GiC).
GiM IO board	Main controller board for data processing and connection of communication wires.
GiC	Grundfos iSolutions Cloud.
GiM	GRUNDFOS iSOLUTIONS MONITOR.
GRM	Grundfos Remote Management.
VTU	Vibration, Temperature, Ultrasonic.
VTU board	Add-on module with connection to VTU sensor.

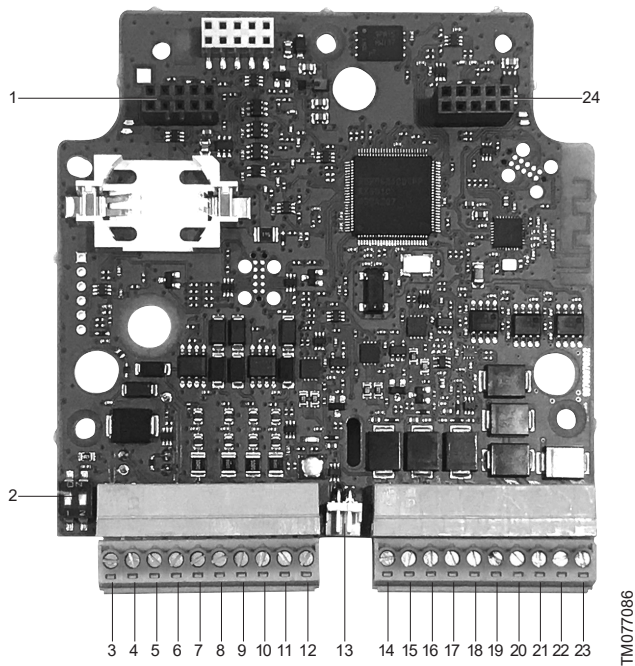
3. Specification

3.1 Modbus RTU

The table below provides an overview of the specifications for GiM Modbus RTU. For further details, refer to the specific sections of this functional profile.

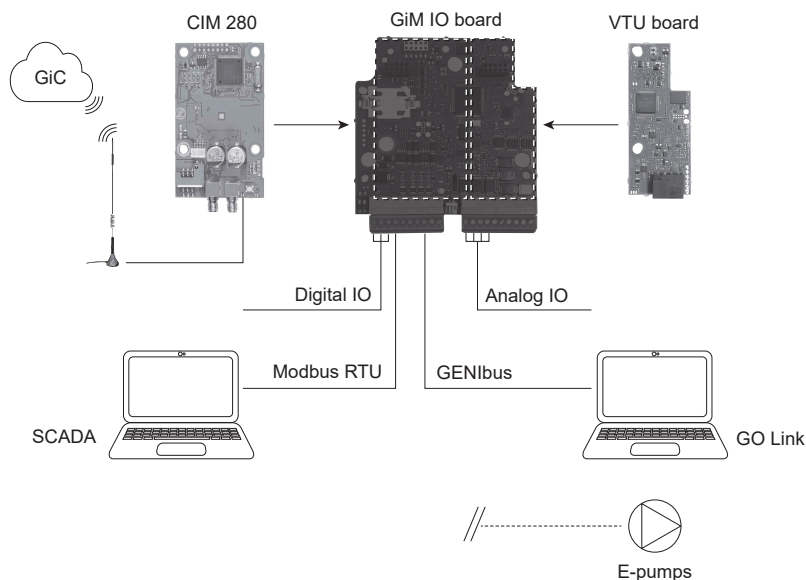
Modbus RTU specifications	Description	Comments
Modbus connector	Screw-type terminal	3 pins
Modbus connection type	RS-485, 2-wire + common	Conductors: D0, D1 and Common/GND
Maximum cable length	1200 m	Equals 4000 ft, cable length can be increased by using a RS-485 repeater.
Slave address	[1: 247]	Set via Grundfos GO Remote 2.0 app or write into MODBUS register at address 00003. Default: 247.
Line termination	ON or OFF	Set via DIP switches SW1 and SW2 on GiM IO board. Default: OFF.
Recommended cable cross-section	0.20 - 0.25 mm ²	AWG24 or AWG23
Supported transmission speeds	9600, 19200, 38400, 115200 bit/s	Set via Grundfos GO Remote 2.0 app or write into MODBUS register at address 00004. Default: 9600.
Start bit	1	Fixed value
Data bits	8	Fixed value
Stop bits	1, 2	Set via Grundfos GO Remote 2.0 app or write into MODBUS register at address 00009. Default: 1.
Parity bit	Even, odd, no parity	Set via Grundfos GO Remote 2.0 app or write into MODBUS register at address 00010. Default: Even.
Maximum number of Modbus devices	32	Using a RS-485 repeater, you can increase this number.
Maximum Modbus telegram size	256 bytes	Total length. Node address and CRC included.

4. IO board setup



GIM IO board

Pos.	Designation	Description
1	-	Connector for CIM module.
2	SW1/SW2	On/off switches for Modbus termination resistor. Default: OFF.
3	DI	Digital input.
4	GND	Ground.
5	DO NO	Digital output normally open terminal.
6	DO COM	Digital output common terminal.
7	Modbus D1	Modbus RTU terminal D1, for connection to Modbus master (SCADA/PLC).
8	Modbus GND	Modbus RTU terminal ground, for connection to Modbus master (SCADA/PLC).
9	Modbus D0	Modbus RTU terminal D0, for connection to Modbus master (SCADA/PLC).
10	GENIbus A	GENIbus slave terminal A, for connection to GENIbus master (for example GO Link).
11	GENIbus Y	GENIbus slave terminal Y, for connection to GENIbus master (for example GO Link).
12	GENIbus B	GENIbus slave terminal B, for connection to GENIbus master (for example GO Link).
13	-	Connector for Bluetooth button.
14	AI1/DI1	Fixed to analog input 1. Configurable 0.5 - 3.5 V, 0-5 V, 0-10 V, 0-20 mA and, 4-20 mA. Default: 0-10 V.
15	GND	Ground
16	AI2/DI1	Fixed to analog input 2. Configurable 0.5 - 3.5 V, 0-5 V, 0-10 V, 0-20 mA and, 4-20 mA. Default: 0-10 V.
17	GND	Ground.
18	AI3/DI1	Fixed to analog input 3. Configurable 0.5 - 3.5 V, 0-5 V, 0-10 V, 0-20 mA and, 4-20 mA. Default: 0-10 V.
19	GND	Ground.
20	Pt100/Pt1000	Pt temperature input, configurable Pt100 and Pt1000. Default: Pt100.
21	24 V DC EXT 1	24 V DC output 1, maximum current 50 mA.
22	24 V DC EXT 2	24 V DC output 2, maximum current 50 mA.
23	24 V DC EXT 3	24 V DC output 3, maximum current 50 mA.
24	-	Connector for VTU board.



TM074111

Setup overview. The E-pump is connected via the CIU GENibus connector. For connection to GiC via Ethernet, the CIM 500 or CIM 550 ethernet module can be used.

4.1 Termination resistor

The termination resistor is fitted on the GiM IO board and has a value of 150 Ω.

The GiM IO board has a DIP switch with two switches (SW1 and SW2) for cutting the termination resistor in and out. Figure SW1 and SW2 shows the DIP switches in cut-out state.



SW1 and SW2

TM077902

DIP switch settings

Status	SW1	SW2
Cut-in	ON	ON
Cut-out	OFF	OFF

Cable length

bit/s	Maximum cable length	
	Terminated cable	Unterminated cable
	[m/ft]	[m/ft]
1200-9600	1200/4000	1200/4000
19200	1200/4000	600/2000
38400	1200/4000	300/1000
115200	1200/4000	100/330



To ensure a stable and reliable communication, it is important that only the termination resistor of the first and last unit in the Modbus network is cut in.

5. Modbus function code overview

The supported function codes are shown in the table below:

Type	Code	Hex	Name
16-bit data (registers)	03	0x03	Read holding registers (write is not possible)
	04	0x04	Read input registers
	06	0x06	Write single register
	10	0x10	Write multiple registers



Reading and writing coils is not supported.

The same data are available in both holding registers and input registers, meaning that either function (0x03 or 0x04) can be used for reading data.



Unless otherwise stated, the data type used for counters and scaled values is always an unsigned integer.

6. Modbus RTU telegram examples



The Modbus data model states that registers numbered X are addressed in telegrams as X - 1, for example register 00104 (setpoint) is addressed as 00103 in a Modbus telegram.

Note that CRC fields are not shown in the following examples.

6.1 Modbus telegram overview

The maximum size of a Modbus RTU telegram is 256 bytes. Telegrams must be separated by a silent interval of at least 3.5 character times.

The standard Modbus RTU telegram format is shown in the table below.

Slave address	Function code	Data	CRC
1 byte	1 byte	0 to 252 bytes	2 bytes

A telegram starts with the slave address occupying one byte. Then comes a variable-size data field. For each telegram, a CRC is calculated and appended to the telegram, two bytes total. All bytes in the telegram, except for the CRC itself, are included in the check.

Note that the CRC bytes are not shown in the examples in the following sections.

6.2 Read holding registers, 0x03

This function is used for reading holding registers from the slave.

The request telegram specifies the starting address, that is the address of the first register to be read, and the number of holding registers to read. In the telegram, register addresses start from zero, meaning that registers numbered 1-16 are addressed as 0-15.

Example of request from master to slave

Field	Value
Address	0x01
Function code	0x03
Start address HI	0x00
Start address LO	0x6B
Quantity HI	0x00
Quantity LO	0x03

In the request, the slave with address 1 is asked to deliver three contiguous registers starting from address 0x006B, meaning register 0x006C.

Example of response from slave to master

Field	Value
Address	0x01
Function code	0x03
Byte count	0x06
Register 108 HI	0x00
Register 108 LO	0x01
Register 109 HI	0x00
Register 109 LO	0x01
Register 110 HI	0x00
Register 110 LO	0x01

In the response, the byte count is six since there are three registers of two bytes. All three registers hold the value of 0x0001.

6.3 Read input registers, 0x04

This function is used for reading input registers from the slave. Input registers are read-only registers by definition. The request telegram specifies the starting address, that is the address of the first register to be read, and the number of holding registers to read. In the telegram, register addresses start from zero, meaning that registers numbered 1-16 are addressed as 0-15.

Example of request from master to slave

Field	Value
Address	0x01
Function code	0x04
Start address HI	0x10
Start address LO	0x10
Quantity HI	0x00
Quantity LO	0x03

In the request, the slave with address 1 is asked to deliver three contiguous registers starting from address 0x1010, meaning register 0x1011.

Example of response from slave to master

Field	Value
Address	0x01
Function code	0x04
Byte count	0x06
Register 4113 HI	0x22
Register 4113 LO	0x22
Register 4114 HI	0x22
Register 4114 LO	0x22
Register 4115 HI	0x22
Register 4115 LO	0x22

In the response, the byte count is six since there are three registers of two bytes. All three registers hold the value of 0x2222.

6.4 Write single register, 0x06

This function is used for writing a single holding register in the slave. The request telegram specifies the address of the register that is to be written. Register addresses start from zero, meaning that a register numbered 10 is addressed as 9.

The normal response is an echo of the request, indicating that the value was written.

Example of request from master to slave

Field	Value
Address	0x01
Function code	0x06
Address HI	0x10
Address LO	0x00
Value HI	0xAF
Value LO	0xFE

In the request, the slave with address 1 is asked to write the value of 0xAFFE to the register at address 0x1000, meaning register 0x1001.

Example of response from slave to master

Field	Value
Address	0x01
Function code	0x06
Address HI	0x10
Address LO	0x00
Value HI	0xAF
Value LO	0xFE

The response is an echo of the request.

6.5 Write multiple registers, 0x10

This function is used for writing a block of contiguous holding registers in the slave. Register addresses start from zero, meaning that a register numbered 100 is addressed as 99.

Example of request from master to slave

Field	Value
Address	0x01
Function code	0x10
Start address HI	0x00
Start address LO	0x20
Quantity HI	0x00
Quantity LO	0x02
Byte count	0x04
Register 33 HI	0x00
Register 33 LO	0x01
Register 34 HI	0xB0
Register 34 LO	0xB0

In the request, the slave with address 1 is asked to write the value of 0x0001 to the register at address 0x0020, meaning 0x0021, and the value of 0xB0B0 to the register at address 0x0021, meaning 0x0022.

Example of response from slave to master

Field	Value
Address	0x01
Function code	0x10
Start address HI	0x00
Start address LO	0x20
Quantity written HI	0x00
Quantity written LO	0x02

The response returns the function code, starting address and quantity of registers written.

7. Modbus register addresses



A register either uses the data type signed integer or unsigned integer. For signed integers the value 0x7FFF indicates "Data not available". For unsigned integers it is the value 0xFFFF that indicates "Data not available".

7.1 Device configuration [R/W]

All registers are data type unsigned integer.

Register	Access	Modbus parameter name	Description	Modbus scale
00001	-	Reserved	-	-
00002	-	Reserved	-	-
00003	R/W	Config.ModbusAddress	Modbus Slave Address Valid range: 1-247 Default: 247	Unscaled
00004	R/W	Config.ModbusBitRate	Transmission speed setting for Modbus Slave 3: 9600 bits/s. (Default) 4: 19200 bits/s 5: 38400 bits/s 9: 115200 bits/s	Enum
00005	R/W	Config.AutoAckControlBits	Used to select the behavior of control bit acknowledgements from the device. 0: Manual Control bits are not automatically lowered when accepted by the device. The user must lower the triggered control bit manually before the control bit can be triggered again. 1: Automatic. (Default) Control bits are automatically lowered when accepted by the device.	Enum
00006 - 00008	-	Reserved	-	-
00009	R/W	Config.ModbusParity	Parity setting for Modbus Slave. 0 = No parity 1 = Even parity (Default) 2 = Odd parity	Enum
00010	R/W	Config.ModbusStopBits	Stop bits setting for Modbus Slave. 1 = 1 stop bit (Default) 2 = 2 stop bit	Enum

7.2 Device status [R]

All registers are data type unsigned integer.

Register	Access	Modbus parameter name	Description	Modbus scale
00030	R	GrundfosUnitFamily	Grundfos product family.	Enum
00031	R	GrundfosUnitType	Grundfos product type number.	Unscaled
00032	R	GrundfosUnitVersion	Grundfos product version number.	Unscaled
00038	R	Reserved	-	-
00039	R	Reserved	-	-
00040	R	Reserved	-	-
00041	R	Reserved	-	-
00042	R	Reserved	-	-
00043	R	Reserved	-	-
00044	R	Reserved	-	-
00045	R	Reserved	-	-
00046	R	GiMIOBoardSoftwareVersionHI	GiM IO-board software version high (BCD digit 1-4 aa.bb).	BCD number
00047	R	GiMIOBoardSoftwareVersionLO	GiM IO-board software version low (BCD digit 5-6 cc).	BCD number
00048	R	GiMIOBoardSoftwareBuildHI	GiM IO-board software build (BCD digit 1).	BCD number
00049	R	GiMIOBoardSoftwareBuildLO	GiM IO-board software version (BCD digit 2-5).	BCD number

Register	Access	Modbus parameter name	Description	Modbus scale
00050	R	GiMIOBoardSoftwareDayMonth	GiM IO-board software date (BCD ddmm).	BCD number
00051	R	GiMIOBoardSoftwareDayYear	GiM IO-board software date (BCD yyyy).	BCD number
00052	R	GiMVTUBoardSoftwareVersionHI	GiM VTU-board software version high (BCD digit 1-4 aa.bb).	BCD number
00053	R	GiMVTUBoardSoftwareVersionLO	GiM VTU-board software version low (BCD digit 5-6 cc).	BCD number
00054	R	GiMVTUBoardSoftwareBuildHI	GiM VTU-board software build (BCD digit 1).	BCD number
00055	R	GiMVTUBoardSoftwareBuildLO	GiM VTU-board software version (BCD digit 2-5).	BCD number

7.3 Control and configuration [W]

All registers are data type unsigned integer.

Register	Access	Modbus parameter name	Description	Modbus scale
00101.0	W	Control.ResetAlarm	Resets alarms and warnings (rising edge).	Bool

7.4 Status [R]

All registers are data type unsigned integer.

Register	Access	Modbus parameter name	Description	Modbus scale
00201.0	R	Status.ResetAlarmAck	Acknowledge of reset alarm	Bool
00202	R	Status.WarningCode	<p>Grundfos-specific warning codes.</p> <p>Code 3: External alarm signal from digital input</p> <p>Code 24: mechanical vibration is critical</p> <p>Code 30: change bearings</p> <p>Code 61: water hammer is critical</p> <p>Code 44: undertemperature</p> <p>Code 46: External warning signal from digital input</p> <p>Code 57: dry-running state has occurred for more than 10 s</p> <p>Code 64: overtemperature</p> <p>Code 76: internal communication error</p> <p>Code 88: sensor fault or no sensor attached</p> <p>Code 131: mechanical unbalance is critical</p> <p>Code 133: generic sensor limit exceeded</p> <p>Code 152: add-on module communication fault</p> <p>Code 157: Real Time Clock fault</p> <p>Code 159: CIM module communication fault</p> <p>Code 162: sensor supply fault, 24 V</p> <p>Code 165: generic analog input signal fault</p> <p>Code 208: cavitation is critical.</p>	Enum
00203	R	Status.AlarmCode	<p>Grundfos-specific alarm codes.</p> <p>Code 3: External alarm signal from digital input</p> <p>Code 24: mechanical vibration is critical</p> <p>Code 30: change bearings</p> <p>Code 61: water hammer is critical</p> <p>Code 44: undertemperature</p> <p>Code 46: External warning signal from digital input</p> <p>Code 57: dry-running state has occurred for more than 10 s</p> <p>Code 64: overtemperature</p> <p>Code 76: internal communication error</p> <p>Code 88: sensor fault or no sensor attached</p> <p>Code 131: mechanical unbalance is critical</p> <p>Code 133: generic sensor limit exceeded</p> <p>Code 152: add-on module communication fault</p> <p>Code 157: Real Time Clock fault</p> <p>Code 159: CIM module communication fault</p> <p>Code 162: sensor supply fault, 24 V</p> <p>Code 165: generic analog input signal fault</p> <p>Code 208: cavitation is critical.</p>	Enum
00204	R	Status.SubWarningCode	<p>Grundfos-specific sub codes.</p> <p>Main code 133: Generic sensor limit exceeded.</p> <p>Subcode 1001: Limit 1 exceeded</p> <p>Subcode 1002: Limit 2 exceeded</p> <p>Subcode 1003: Limit 3 exceeded</p> <p>Subcode 1004: Limit 4 exceeded</p> <p>Subcode 1005: Limit 5 exceeded</p> <p>Subcode 1006: Limit 6 exceeded</p> <p>Subcode 1007: Limit 7 exceeded</p> <p>Subcode 1008: Limit 8 exceeded</p>	Enum
00205	R	Status.SubAlarmCode	<p>Main code 162: Sensor supply fault, 24 V</p> <p>Subcode 1001: 24 V output 1 out of range</p> <p>Subcode 1002: 24 V output 2 out of range</p> <p>Subcode 1003: 24 V output 3 out of range</p> <p>Main code 165: Signal fault, generic analog input.</p> <p>Subcode 1001: Signal fault, analog AI1</p> <p>Subcode 1002: Signal fault, analog AI2</p> <p>Subcode 1003: Signal fault, analog AI3</p> <p>Subcode 2001: Signal fault, Pt sensor 1</p>	
00206.0	R	StatusWarnBits.VibrationCritical	Mechanical vibration is critical, code 24.	Bool

Register	Access	Modbus parameter name	Description	Modbus scale
00206.1	R	Reserved	-	-
00206.2	R	StatusWarnBits.DryRunState	Dry-running state has occurred for more than 10 s, code 57.	Bool
00206.3	R	StatusWarnBits.SensorFault	Sensor fault or no sensor attached, code 88.	Bool
00206.4	R	StatusWarnBits.InternalCommFault	Internal communication error, code 76.	Bool
00206.5	R	StatusWarnBits.CavitationCritical	Cavitation is critical, code 208.	Bool
00206.6	R	StatusWarnBits.Overtemperature	Overtemperature, code 64.	Bool
00206.7	R	StatusWarnBits.Undertemperature	Undertemperature, code 44.	Bool
00206.8	R	StatusWarnBits.WaterhammerCritica	Water hammer is critical, code 61.	Bool
00206.9	R	StatusWarnBits.UnbalanceCritical	Mechanical unbalance is critical, code 131.	Bool
00206.10	R	StatusWarnBits.RealTimeClockFaul	Real Time Clock fault, code 157.	Bool
00206.11	R	StatusWarnBits.CIMCommFault	CIM module communication fault, code 159.	Bool
00206.12	R	StatusWarnBits.AddOnModuleCommFault	Add on module communication fault, code 152.	Bool
00206.13	R	StatusWarnBits.ExternalWarningSignal	External warning signal from digital input, code 46.	Bool
00207.0	R	StatusAlarmBits.VibrationCritical	Mechanical vibration is critical, code 24.	Bool
00207.1	R	Reserved	-	-
00207.2	R	StatusAlarmBits.DryRunState	Dry-running state has occurred for more than 10 s, code 57.	Bool
00207.3	R	StatusAlarmBits.SensorFault	Sensor fault or no sensor attached, code 88.	Bool
00207.4	R	StatusAlarmBits.InternalCommFault	Internal communication error, code 76.	Bool
00207.5	R	StatusAlarmBits.CavitationCritical	Cavitation is critical, code 208.	Bool
00207.6	R	StatusAlarmBits.Overtemperature	Overtemperature, code 64.	Bool
00207.7	R	StatusAlarmBits.Undertemperature	Undertemperature, code 44.	Bool
00207.8	R	StatusAlarmBits.WaterhammerCritical	Water hammer is critical, code 61.	Bool
00207.9	R	StatusAlarmBits.UnbalanceCritical	Mechanical unbalance is critical, code 131.	Bool
00207.10	R	StatusAlarmBits.RealTimeClockFault	Real Time Clock fault, code 157.	Bool
00207.11	R	StatusAlarmBits.CIMCommFault	CIM module communication fault, code 159.	Bool
00207.12	R	StatusAlarmBits.AddOnModuleCommFault	Add on module communication fault, code 152.	Bool
00207.13	R	StatusAlarmBits.ExternalAlarmSignal	External alarm signal from digital input, code 3.	Bool
00208	R	Status.UnixRtc_HI	Device time and date in UNIX format.	1 s
00209	R	Status.UnixRtc_LO		

7.5 Data [R]

All registers are data type unsigned integer.

Register	Access	Data type	Modbus parameter name	Description	Modbus scale
00301	R	unsigned	MeasuredData.MotorSpeed	Motor speed.	1 rpm
00302	R	unsigned	Reserved	-	-
00303	R	unsigned			
00304	R	unsigned			
00305	R	unsigned			
00306	R	unsigned	MeasuredData.UnbalanceWarnLimit	Mechanical unbalance level, warning limit.	0.01 mm/s
00307	R	unsigned	MeasuredData.UnbalanceAlarmLimit	Mechanical unbalance level, alarm limit.	0.01 mm/s
00308	R	unsigned	MeasuredData.UnbalanceUpperLimit	Mechanical unbalance level, max. upper limit.	0.01 mm/s
00309	R	unsigned	MeasuredData.UnbalanceState	State of mechanical unbalance. 1: Good 2: Poor, warning 3: Bad, alarm 255: Not detectable.	Enum
00310	R	unsigned	MeasuredData.Cavitation	Cavitation level, normalised.	0.01
00311	R	unsigned	MeasuredData.CavitationWarnLimit	Cavitation level, warning limit.	0.01
00312	R	unsigned	MeasuredData.CavitationAlarmLimit	Cavitation level, alarm limit.	0.01
00313	R	unsigned	MeasuredData.CavitationUpperLimit	Cavitation level, max. upper limit.	0.01
00314	R	unsigned	MeasuredData.CavitationState	State of pump cavitation. 1: Good 2: Poor, warning 3: Bad, alarm 255: Not detectable.	Enum
00315	R	unsigned	MeasuredData.WaterHammer	Water hammer level, normalised.	0.01
00316	R	unsigned	MeasuredData.WaterHammerWarnLimit	Water hammer level, warning limit.	0.01
00317	R	unsigned	MeasuredData.WaterHammerAlarmLimit	Water hammer level, alarm limit.	0.01
00318	R	unsigned	MeasuredData.WaterHammerUpperLimit	Water hammer level, max. upper limit.	0.01
00319	R	unsigned	MeasuredData.WaterHammerState	State of water hammer. 1: Good 2: Poor, warning 3: Bad, alarm 255: Not detectable.	Enum
00320	R	unsigned	Reserved	-	-
00321	R	unsigned			
00322	R	unsigned			
00323	R	unsigned			
00324	R	unsigned			
00325	R	unsigned	MeasuredData.AbsoluteOverallVibration	Absolute Overall Vibration level (normalized)	0.01 mm/s
00326	R	unsigned	MeasuredData.AbsoluteOverallVibrationWarnLimit	Absolute Overall Vibration level, warning limit	0.01 mm/s
00327	R	unsigned	MeasuredData.AbsoluteOverallVibrationAlarmLimit	Absolute Overall Vibration level, alarm limit	0.01 mm/s
00328	R	unsigned	MeasuredData.AbsoluteOverallVibrationUpperLimit	Absolute Overall Vibration level, upper limit (range)	0.01 mm/s
00329	R	unsigned	MeasuredData.AbsoluteOverallVibrationState	State of Absolute Overall Vibration level 1: Good 2: Poor, warning 3: Bad, alarm 255: Not detectable	Enum
00330	R	unsigned	MeasuredData.DryRunning	Current status of dry-running detection.	Bool
00331	R	signed	MeasuredData.LiquidTemp	Temperature of pumped liquid.	0.1 °C

Register	Access	Data type	Modbus parameter name	Description	Modbus scale
00332	R	signed	MeasuredData.LowLiquidTempWarnLimit	Pumped liquid low temperature, warning limit.	0.1 °C
00333	R	signed	MeasuredData.LowLiquidTempAlarmLimit	Pumped liquid low temperature, alarm limit.	0.1 °C
00334	R	signed	MeasuredData.LowLiquidTempLowerLimit	Pumped liquid low temperature, minimum lower limit (range).	0.1 °C
00335	R	unsigned	MeasuredData.LowLiquidTempState	State of low liquid temperature. 1: Good 2: Poor, warning 3: Bad, alarm 255: Not detectable.	Enum
00336	R	signed	MeasuredData.HighLiquidTempWarnLimit	Pumped liquid high temperature, warning limit.	0.1 °C
00337	R	signed	MeasuredData.HighLiquidTempAlarmLimit	Pumped liquid high temperature, alarm limit.	0.1 °C
00338	R	signed	MeasuredData.HighLiquidTempUpperLimit	Pumped liquid high temperature, maximum upper limit (range).	0.1 °C
00339	R	unsigned	MeasuredData.HighLiquidTempState	State of high liquid temperature. 1: Good 2: Poor, warning 3: Bad, alarm 255: Not detectable.	Enum

7.6 Reserved registers [R]

All registers are data type unsigned integer.

Register	Access	Modbus parameter name	Modbus notes, development
00360-00376	R	Reserved	Reserved, 16-bit measured data.
00377-00386	R	Reserved	Reserved, 16-bit configuration parameters.
00387-00396	R	Reserved	Reserved, 16-bit reference values, setpoints.

7.7 GiM IO board control

All registers are data type unsigned integer.

Register	Access	Name	Description	Scaling
01201-10	-	-	-	-

7.8 GiM IO board configuration

All registers are data type unsigned integer.

Register	Access	Name	Description	Scaling
01211.0	W	GiMIO.SetLimit1ExceededED	Configuration of Limit 1 exceeded function E/D, 0: Disabled 1: Enabled.	Bool
01211.1	W	GiMIO.SetLimit2ExceededED	Configuration of Limit 2 exceeded function E/D, 0: Disabled 1: Enabled.	Bool
01211.2	W	GiMIO.SetLimit3ExceededED	Configuration of Limit 3 exceeded function E/D, 10: Disabled 1: Enabled.	Bool
01211.3	W	GiMIO.SetLimit4ExceededED	Configuration of Limit 4 exceeded function E/D, 0: Disabled 1: Enabled.	Bool
01211.4	W	GiMIO.SetLimit5ExceededED	Configuration of Limit 5 exceeded function E/D, 0: Disabled 1: Enabled.	Bool

Register	Access	Name	Description	Scaling
01211.5	W	GiMIO.SetLimit6ExceededED	Configuration of Limit 6 exceeded function E/D, 0: Disabled 1: Enabled.	Bool
01211.6	W	GiMIO.SetLimit7ExceededED	Configuration of Limit 7 exceeded function E/D, 0: Disabled 1: Enabled.	Bool
01211.7	W	GiMIO.SetLimit8ExceededED	Configuration of Limit 8 exceeded function E/D, 0: Disabled 1: Enabled.	Bool
01212-20	-	-	-	-

7.9 GiM IO board configuration status

All registers are data type unsigned integer.

Register	Access	Name	Description	Scaling
01221.0	R	GiMIO.Limit1ExceededED	Status of Limit 1 exceeded function E/D, 0: Disabled 1: Enabled.	Bool
01221.1	R	GiMIO.Limit2ExceededED	Status of Limit 2 exceeded function E/D, 0: Disabled 1: Enabled.	Bool
01221.2	R	GiMIO.Limit3ExceededED	Status of Limit 3 exceeded function E/D, 0: Disabled 1: Enabled.	Bool
01221.3	R	GiMIO.Limit4ExceededED	Status of Limit 4 exceeded function E/D, 0: Disabled 1: Enabled.	Bool
01221.4	R	GiMIO.Limit5ExceededED	Status of Limit 5 exceeded function E/D, 0: Disabled 1: Enabled.	Bool
01221.5	R	GiMIO.Limit6ExceededED	Status of Limit 6 exceeded function E/D, 0: Disabled 1: Enabled.	Bool
01221.6	R	GiMIO.Limit7ExceededED	Status of Limit 7 exceeded function E/D, 0: Disabled 1: Enabled.	Bool
01221.7	R	GiMIO.Limit8ExceededED	Status of Limit 8 exceeded function E/D, 0: Disabled 1: Enabled.	Bool
01222-30	-	-	-	-

7.10 GiM IO board event status

All registers are data type unsigned integer.

Register	Access	Name	Description	Scaling
01231.0	R	GiMIO.Limit1Exceeded	Limit 1 exceeded (Code 133.1001). 0: Event not active 1: Event active.	Bool
01231.1	R	GiMIO.Limit2Exceeded	Limit 2 exceeded (Code 133.1002). 0: Event not active 1: Event active.	Bool
01231.2	R	GiMIO.Limit3Exceeded	Limit 3 exceeded (Code 133.1003). 0: Event not active 1: Event active.	Bool
01231.3	R	GiMIO.Limit4Exceeded	Limit 4 exceeded (Code 133.1004). 0: Event not active 1: Event active.	Bool
01231.4	R	GiMIO.Limit5Exceeded	Limit 5 exceeded (Code 133.1005). 0: Event not active 1: Event active.	Bool

Register	Access	Name	Description	Scaling
01231.5	R	GiMIO.Limit6Exceeded	Limit 6 exceeded (Code 133.1006). 0: Event not active 1: Event active.	Bool
01231.6	R	GiMIO.Limit7Exceeded	Limit 7 exceeded (Code 133.1007). 0: Event not active 1: Event active.	Bool
01231.7	R	GiMIO.Limit8Exceeded	Limit 8 exceeded (Code 133.1008). 0: Event not active 1: Event active.	Bool
01232.0	R	GiMIO.AnalogIn1OutOfRange	Analog Input 1 outside range (Code 165.1001). 0: Event not active 1: Event active.	Bool
01232.1	R	GiMIO.AnalogIn2OutOfRange	Analog Input 2 outside range (Code 165.1002). 0: Event not active 1: Event active.	Bool
01232.2	R	GiMIO.AnalogIn3OutOfRange	Analog Input 3 outside range (Code 165.1003). 0: Event not active 1: Event active.	Bool
01233.0	R	GiMIO.24V1OutOfRange	24V output 1 outside range (Code 162.1001). 0: Event not active 1: Event active.	Bool
01233.1	R	GiMIO.24V2OutOfRange	24V output 2 outside range (Code 162.1002). 0: Event not active 1: Event active.	Bool
01233.2	R	GiMIO.24V3OutOfRange	24V output 3 outside range (Code 162.1003). 0: Event not active 1: Event active.	Bool
01234.0	R	GiMIO.PtSensorOutOfRange	Pt temperature sensor, outside range or no sensor attached (Code 165.2001). 0: Event not active 1: Event active.	Bool
01235-40	-	-	-	-

7.11 GiM IO board digital status

All registers are data type unsigned integer.

Register	Access	Name	Description	Scaling
01241.0	R	GiMIO.DigitalInput	DI, fixed digital input. 0: Not active 1: Active.	Bool
01242.0	R	GiMIO.RelayOutput	DO, fixed relay output. 0: Not active 1: Active.	Bool
01243-50	-	-	-	-

7.12 GiM IO board sensor measurements

Register	Access	Data type	Name	Description	Scaling
01251	R	signed	GiMIO.AnalogInput1scaled	Analog input 1 scaled.	Unit
01252	R	signed	GiMIO.AnalogInput1Relative	Analog input 1 relative to range.	0.01 %*
01253	R	unsigned	GiMIO.AnalogInput1Unit	Analog input 1 scaling unit.	Enum**
01254	R	signed	GiMIO.AnalogInput1Min	Analog input 1 scaling range minimum value.	Unit
01255	R	signed	GiMIO.AnalogInput1Max	Analog input 1 scaling range maximum value.	Unit
01256	R	signed	GiMIO.AnalogInput2Scaled	Analog input 2 scaled.	Unit
01257	R	signed	GiMIO.AnalogInput2Relative	Analog input 2 relative to range.	0.01 %*
01258	R	unsigned	GiMIO.AnalogInput2Unit	Analog input 2 scaling unit.	Enum**
01259	R	signed	GiMIO.AnalogInput2Min	Analog input 2 scaling range minimum value.	Unit
01260	R	signed	GiMIO.AnalogInput2Max	Analog input 2 scaling range maximum value.	Unit
01261	R	signed	GiMIO.AnalogInput3Scaled	Analog input 3 scaled.	Unit
01262	R	signed	GiMIO.AnalogInput3Relative	Analog input 3 relative to range.	0.01 %*
01263	R	unsigned	GiMIO.AnalogInput3Unit	Analog input 3 scaling unit.	Enum**
01264	R	signed	GiMIO.AnalogInput3Min	Analog input 3 scaling range minimum value.	Unit
01265	R	signed	GiMIO.AnalogInput3Max	Analog input 3 scaling range maximum value.	Unit
01266	R	signed	GiMIO.TemperatureInput	Pt1, temperature input 1 (Pt100/Pt1000 configurable).	0.1 °C
01267-70	-	-	-	-	-

* Percentage of the sensor scaling range.

** GENIpro units. The enum is equivalent to GENIpro UNIT index. See section Generic scaling of GiM IO board analog measurements AI1, AI2 and AI3.

Related information

[7.14 Generic scaling of GiM IO board analog measurements AI1, AI2 and AI3](#)

7.13 GiM IO board sensors mapped to parameters

Register	Access	Data type	Name	Description	Scaling
01271	R	signed	GiMIO.InletPressure	Pump inlet pressure.	0.01 bar
01272	R	signed	GiMIO.InletDiffPressure	Pump inlet differential pressure.	0.01 bar
01273	R	signed	GiMIO.OutletPressure	Pump outlet pressure.	0.01 bar
01274	R	signed	GiMIO.OutletDiffPressure	Pump outlet differential pressure.	0.01 bar
01275	R	signed	GiMIO.DiffPressureHead	Pump differential pressure, Head	0.01 bar
01276	R	signed	GiMIO.RemotePressure1	Remote pressure 1.	0.01 bar
01277	R	signed	GiMIO.RemotePressure2	Remote pressure 2.	0.01 bar
01278	R	signed	GiMIO.RemoteDiffPressure	Remote differential pressure.	0.01 bar
01279	R	unsigned	GiMIO.TankLevelEmptying	Tank level, emptying	0.001 m
01280	R	unsigned	GiMIO.TankLevelFilling	Tank level, filling	0.001 m
01281	R	unsigned	GiMIO.PumpFlow	Pump flow.	0.01 m ³ /h
01282	R	unsigned	GiMIO.RemoteFlow	Remote flow.	0.01 m ³ /h
01283	R	signed	GiMIO.LiquidTemperature	Pumped liquid temperature.	0.1 °C
01284	R	signed	GiMIO.RemoteLiquidTemperature1	Remote liquid temperature 1	0.1 °C
01285	R	signed	GiMIO.RemoteLiquidTemperature2	Remote liquid temperature 2	0.1 °C
01286	R	signed	GiMIO.RemoteLiquidDiffTemperature	Remote liquid differential temperature	0.1 °C
01287	R	signed	GiMIO.AmbientTemperatureOutdoor	Ambient temperature, outdoor.	0.1 °C
01288	R	signed	GiMIO.AmbientTemperatureRoom	Ambient temperature, room.	0.1 °C
01289	R	signed	GiMIO.BearingTemperatureDE	Bearing temperature, Drive End.	0.1 °C

Register	Access	Data type	Name	Description	Scaling
01290	R	signed	GiMIO.BearingTemperatureNDE	Bearing temperature, Non-Drive End.	0.1 °C
01291	R	signed	GiMIO.AuxSensorInput	Auxiliary sensor input.	0.01 %
01292	R	signed	GiMIO.RemoteTemperature1	Remote temperature 1	0.1 °C
01293	R	signed	GiMIO.RemoteTemperature2	Remote temperature 2	0.1 °C
01294	R	signed	GiMIO.RemoteDiffTemperature	Remote differential temperature	0.1 °C

7.14 Generic scaling of GiM IO board analog measurements AI1, AI2 and AI3

Introduction of information that enables a SCADA system to automatically scale the analog measurements:

$$X_{\text{phy}} = \text{Unit} \times X_{\text{scaled}} = \text{Unit} \times (X_{\text{relative}} \times (S_{\text{max}} - S_{\text{min}}) / 10000 + S_{\text{min}}) // \text{ Full range is 10000, because the analog input counts in 0.01 \%.$$

X_{phy}	Calculated physical value.
X_{scaled}	The parameter scaled in a physical unit with a scaling factor (see table below).
X_{relative}	The relative value of the parameter (scaled in 0.01 %).
S_{max}	The maximum value of the analog sensor scaling range.
S_{min}	The minimum value of the analog sensor scaling range.
Unit	The physical unit with a scaling factor. The Modbus register reads the unit index [enum] in the lookup table below.

Description	Unit	Unit Index
Water level or head	0.01 m	83
Pressure	0.01 bar	27
Absolute Temperature	0.1 °C	20
Temperature difference	0.01 °C	110
Volume flow	0.1 m ³ /h	22
Relative value (percentage)	0.01 %	107

8. Grundfos GO configuration of the GiM IO board

Below is an overview of the GiM IO board configuration done with Grundfos GO Remote. Only a small part of this data marked with crosses can be accessed from Modbus.

Source	Parameter for configuration via Grundfos GO Remote	Modbus	
		Writing	Reading
DI	Function, default: none.	-	-
DO	Function, default: dry-run alarm.	-	-
AI1, AI2, AI3	Signal type, default: 0-10 V.	-	-
	Measured parameter, default: none.	-	-
	Min/max/scaling unit.	-	x
Pt	Pt100/Pt1000 selection, default: Pt100.	-	-
	Measurement, default: none.	-	x
Limit exceeded	E/D Limit exceeded limits, default: disabled.	x	x
	Limits 1-8.	-	-
Modbus	Address [1: 247], default: 247.	x	x
	Communication speed: 9600, 19200, 38400, 115200 bit/s. Default: 9600.	x	x
	Stop bits: 1 (default), 2.	x	x
	Parity bit: Even (default), odd, none.	x	x

Argentina

Bombas GRUNDFOS de Argentina S.A.
Ruta Panamericana km. 37.500 Industiun
1619 - Garin Pcia. de B.A.
Tel.: +54-3327 414 444
Fax: +54-3327 45 3190

Australia

GRUNDFOS Pumps Pty. Ltd.
P.O. Box 2040
Regency Park
South Australia 5942
Tel.: +61-8-8461-4611
Fax: +61-8-8340-0155

Austria

GRUNDFOS Pumpen Vertrieb Ges.m.b.H.
Grundfosstraße 2
A-5082 Grödig/Salzburg
Tel.: +43-6246-883-0
Fax: +43-6246-883-30

Belgium

N.V. GRUNDFOS Bellux S.A.
Boonsesteenweg 81-83
B-2630 Aartselaar
Tel.: +32-3-870 7300
Fax: +32-3-870 7301

Belarus

Представительство ГРУНДФОС в Минске
220125, Минск
ул. Шафарьянская, 11, оф. 56, БЦ «Порт»
Tel.: +375 17 397 397 3
+375 17 397 397 4
Факс: +375 17 397 397 1
E-mail: minsk@grundfos.com

Bosnia and Herzegovina

GRUNDFOS Sarajevo
Zmaj od Bosne 7-7A
BiH-71000 Sarajevo
Tel.: +387 33 592 480
Fax: +387 33 590 465
www.ba.grundfos.com
E-mail: grundfos@bih.net.ba

Brazil

BOMBAS GRUNDFOS DO BRASIL
Av. Humberto de Alencar Castelo Branco,
630
CEP 09850 - 300
São Bernardo do Campo - SP
Tel.: +55-11 4393 5533
Fax: +55-11 4343 5015

Bulgaria

Grundfos Bulgaria EOOD
Slatina District
Iztochna Tangenta street no. 100
BG - 1592 Sofia
Tel.: +359 2 49 22 200
Fax: +359 2 49 22 201
E-mail: bulgaria@grundfos.bg

Canada

GRUNDFOS Canada inc.
2941 Brighton Road
Oakville, Ontario
L6H 6C9
Tel.: +1-905 829 9533
Fax: +1-905 829 9512

China

GRUNDFOS Pumps (Shanghai) Co. Ltd.
10F The Hub, No. 33 Suhong Road
Minhang District
Shanghai 201106 PRC
Tel.: +86 21 612 252 22
Fax: +86 21 612 253 33

Columbia

GRUNDFOS Colombia S.A.S.
Km 1.5 vía Siberia-Cota Conj. Potrero
Chico,
Parque Empresarial Arcos de Cota Bod. 1A.
Cota, Cundinamarca
Tel.: +57(1)-2913444
Fax: +57(1)-8764586

Croatia

GRUNDFOS CROATIA d.o.o.
Buzinski prilaz 38, Buzin
HR-10010 Zagreb
Tel.: +385 1 6595 400
Fax: +385 1 6595 499
www.hr.grundfos.com

Czech Republic

GRUNDFOS Sales Czechia and Slovakia
s.r.o.
Čajkovského 21
779 00 Olomouc
Tel.: +420-585-716 111

Denmark

GRUNDFOS DK A/S
Martin Bachs Vej 3
DK-8850 Bjerringbro
Tel.: +45-87 50 50 50
Fax: +45-87 50 51 51
E-mail: info_GDK@grundfos.com
www.grundfos.com/DK

Estonia

GRUNDFOS Pumps Eesti OÜ
Peterburi tee 92G
11415 Tallinn
Tel.: + 372 606 1690
Fax: + 372 606 1691

Finland

OY GRUNDFOS Pumput AB
Trukkikuja 1
FI-01360 Vantaa
Tel.: +358-(0) 207 889 500

France

Pompes GRUNDFOS Distribution S.A.
Parc d'Activités de Chesnes
57, rue de Malacombe
F-38290 St. Quentin Fallavier (Lyon)
Tel.: +33-4 74 82 15 15
Fax: +33-4 74 94 10 51

Germany

GRUNDFOS GMBH
Schlüterstr. 33
40699 Erkrath
Tel.: +49-(0) 211 929 69-0
Fax: +49-(0) 211 929 69-3799
E-mail: infoservice@grundfos.de
Service in Deutschland:
kundendienst@grundfos.de

Greece

GRUNDFOS Hellas A.E.B.E.
20th km. Athinon-Markopoulou Av.
P.O. Box 71
GR-19002 Peania
Tel.: +0030-210-66 83 400
Fax: +0030-210-66 46 273

Hong Kong

GRUNDFOS Pumps (Hong Kong) Ltd.
Unit 1, Ground floor, Siu Wai industrial
Centre
29-33 Wing Hong Street & 68 King Lam
Street, Cheung Sha Wan
Kowloon
Tel.: +852-27861706 / 27861741
Fax: +852-27858664

Hungary

GRUNDFOS Hungária Kft.
Tópark u. 8
H-2045 Törökbálint
Tel.: +36-23 511 110
Fax: +36-23 511 111

India

GRUNDFOS Pumps india Private Limited
118 Old Mahabalipuram Road
Thoraiakkam
Chennai 600 097
Tel.: +91-44 2496 6800

Indonesia

PT GRUNDFOS Pompa
Graha intirub Lt. 2 & 3
Jin. Ciliitan Besar No.454. Makasar,
Jakarta Timur
ID-Jakarta 13650
Tel.: +62 21-469-51900
Fax: +62 21-460 6910 / 460 6901

Ireland

GRUNDFOS (Ireland) Ltd.
Unit A, Merrywell Business Park
Ballymount Road Lower
Dublin 12
Tel.: +353-1-4089 800
Fax: +353-1-4089 830

Italy

GRUNDFOS Pompe Italia S.r.l.
Via Gran Sasso 4
I-20060 Truccazzano (Milano)
Tel.: +39-02-95838112
Fax: +39-02-95309290 / 95838461

Japan

GRUNDFOS Pumps K.K.
1-2-3, Shin-Miyakoda, Kita-ku
Hamamatsu
431-2103 Japan
Tel.: +81 53 428 4760
Fax: +81 53 428 5005

Korea

GRUNDFOS Pumps Korea Ltd.
6th Floor, Aju Building 679-5
Yeoksam-dong, Kangnam-ku, 135-916
Seoul, Korea
Tel.: +82-2-5317 600
Fax: +82-2-5633 725

Latvia

SIA GRUNDFOS Pumps Latvia
Deglava biznesa centrs
Augusta Deglava ielā 60
LV-1035, Rīga,
Tel.: + 371 714 9640, 7 149 641
Fax: + 371 914 9646

Lithuania

GRUNDFOS Pumps UAB
Smolensko g. 6
LT-03201 Vilnius
Tel.: + 370 52 395 430
Fax: + 370 52 395 431

Malaysia

GRUNDFOS Pumps Sdn. Bhd.
7 Jalan Peguam U1/25
Glenmarie industrial Park
40150 Shah Alam, Selangor
Tel.: +60-3-5569 2922
Fax: +60-3-5569 2866

Mexico

Bombas GRUNDFOS de México
S.A. de C.V.
Boulevard TLC No. 15
Parque industrial Stiva Aeropuerto
Apodaca, N.L. 66600
Tel.: +52-81-8144 4000
Fax: +52-81-8144 4010

Netherlands

GRUNDFOS Netherlands
Veluwezoom 35
1326 AE Almere
Postbus 22015
1302 CA ALMERE
Tel.: +31-88-478 6336
Fax: +31-88-478 6332
E-mail: info_gnl@grundfos.com

New Zealand

GRUNDFOS Pumps NZ Ltd.
17 Beatrice Tinsley Crescent
North Harbour Industrial Estate
Albany, Auckland
Tel.: +64-9-415 3240
Fax: +64-9-415 3250

Norway

GRUNDFOS Pumper A/S
Stramsveien 344
Postboks 235, Leirdal
N-1011 Oslo
Tel.: +47-22 90 47 00
Fax: +47-22 32 21 50

Poland

GRUNDFOS Pompy Sp. z o.o.
ul. Klonowa 23
Baranowo k. Poznania
PL-62-081 Przemierowo
Tel.: (+48-61) 650 13 00
Fax: (+48-61) 650 13 50

Portugal

Bombas GRUNDFOS Portugal, S.A.
Rua Calvet de Magalhães, 241
Apartado 1079
P-2770-153 Paço de Arcos
Tel.: +351-21-440 76 00
Fax: +351-21-440 76 90

Romania

GRUNDFOS Pompe România SRL
S-PARK BUSINESS CENTER, Clădirea
A2, etaj 2
Str. Tipografilor, Nr. 11-15, Sector 1, Cod
013714
Bucuresti, Romania
Tel.: 004 021 2004 100
E-mail: romania@grundfos.ro

Russia

ООО Грундфос Россия
ул. Школьная, 39-41
Москва, RU-109544, Russia
Тел. (+7) 495 564-88-00 (495) 737-30-00
Факс (+7) 495 564 8811
E-mail grundfos.moscow@grundfos.com

Serbia

Grundfos Srbija d.o.o.
Omladinskih brigada 90b
11070 Novi Beograd
Tel.: +381 11 2258 740
Fax: +381 11 2281 769
www.rs.grundfos.com

Singapore

GRUNDFOS (Singapore) Pte. Ltd.
25 Jalan Tukang
Singapore 619264
Tel.: +65-6681 9688
Fax: +65-6681 9689

Slovakia

GRUNDFOS s.r.o.
Prievozská 4D 821 09 BRATISLAVA
Tel.: +421 2 5020 1426
sk.grundfos.com

Slovenia

GRUNDFOS LJUBLJANA, d.o.o.
Leskoškova 9e, 1122 Ljubljana
Tel.: +386 (0) 1 568 06 10
Fax: +386 (0) 1 568 06 19
E-mail: tehnika-si@grundfos.com

South Africa

GRUNDFOS (PTY) LTD
16 Lascelles Drive, Meadowbrook Estate
1609 Germiston, Johannesburg
Tel.: (+27) 10 248 6000
Fax: (+27) 10 248 6002
E-mail: lgradidge@grundfos.com

Spain

Bombas GRUNDFOS España S.A.
Camino de la Fuentequilla, s/n
E-28110 Algete (Madrid)
Tel.: +34-91-848 8800
Fax: +34-91-628 0465

Sweden

GRUNDFOS AB
Box 333 (Lunnagårdsgatan 6)
431 24 Mölndal
Tel.: +46 31 332 23 000
Fax: +46 31 331 94 60

Switzerland

GRUNDFOS Pumpen AG
Bruggacherstrasse 10
CH-8117 Fällanden/ZH
Tel.: +41-44-806 8111
Fax: +41-44-806 8115

Taiwan

GRUNDFOS Pumps (Taiwan) Ltd.
7 Floor, 219 Min-Chuan Road
Taichung, Taiwan, R.O.C.
Tel.: +886-4-2305 0868
Fax: +886-4-2305 0878

Thailand

GRUNDFOS (Thailand) Ltd.
92 Chaloem Phrakiat Rama 9 Road
Dokmai, Pravej, Bangkok 10250
Tel.: +66-2-725 8999
Fax: +66-2-725 8998

Turkey

GRUNDFOS POMPA San. ve Tic. Ltd. Sti.
Gebze Organize Sanayi Bölgesi
Ihsan dede Caddesi
2. yol 200. Sokak No. 204
41490 Gebze/ Kocaeli
Tel.: +90 - 262-679 7979
Fax: +90 - 262-679 7905
E-mail: satis@grundfos.com

Ukraine

Бізнес Центр Європа
Столичне шосе, 103
м. Київ, 03131, Україна
Tel.: (+38 044) 237 04 00
Fax: (+38 044) 237 04 01
E-mail: ukraine@grundfos.com

United Arab Emirates

GRUNDFOS Gulf Distribution
P.O. Box 16768
Jebel Ali Free Zone, Dubai
Tel.: +971 4 8815 166
Fax: +971 4 8815 136

United Kingdom

GRUNDFOS Pumps Ltd.
Grovebury Road
Leighton Buzzard/Beds. LU7 4TL
Tel.: +44-1525-850000
Fax: +44-1525-850011

U.S.A.

GRUNDFOS Water Utility Headquarters
856 Koomery Road
Brookshire, Texas 77423 USA

Uzbekistan

Grundfos Tashkent, Uzbekistan
The Representative Office of Grundfos
Kazakhstan in Uzbekistan
38a, Oybek street, Tashkent
Tel.: (+998) 71 150 3290 / 71 150 3291
Fax: (+998) 71 150 3292

99549864 07.2021
ECM: 1317518