



## H-TMV-131-Y-TG - Y-Pattern Thermostatic Mixing Valves w/ Gauge - 131 Max Temp

### H-7x20W-Y-TG Series

#### Y-Pattern Thermostatic Mixing Valve

w/ Dual Scale Temperature Gauge  
 In-Line DZR Brass Valve w/ Angled Cold Inlet  
 Locking Handle, (3) DZR Brass G-Series Unions  
 w/ Integral Check Valves on Inlets  
 Outlet Temperature Range 95°- 131°F

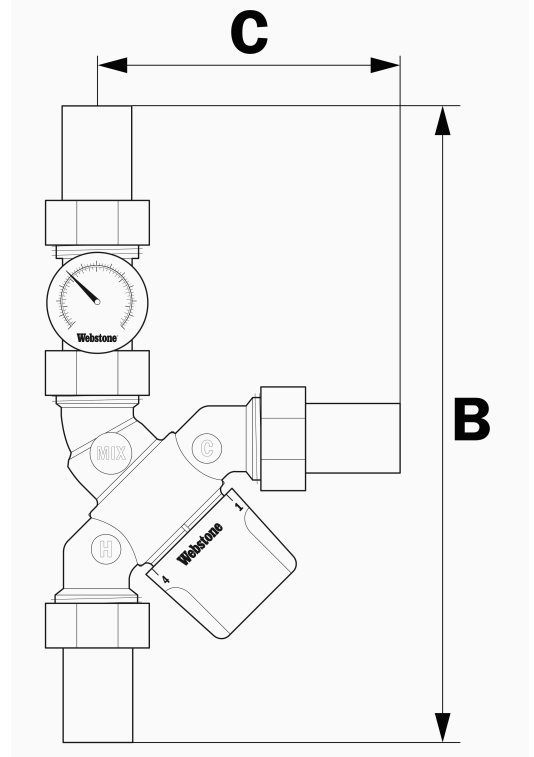
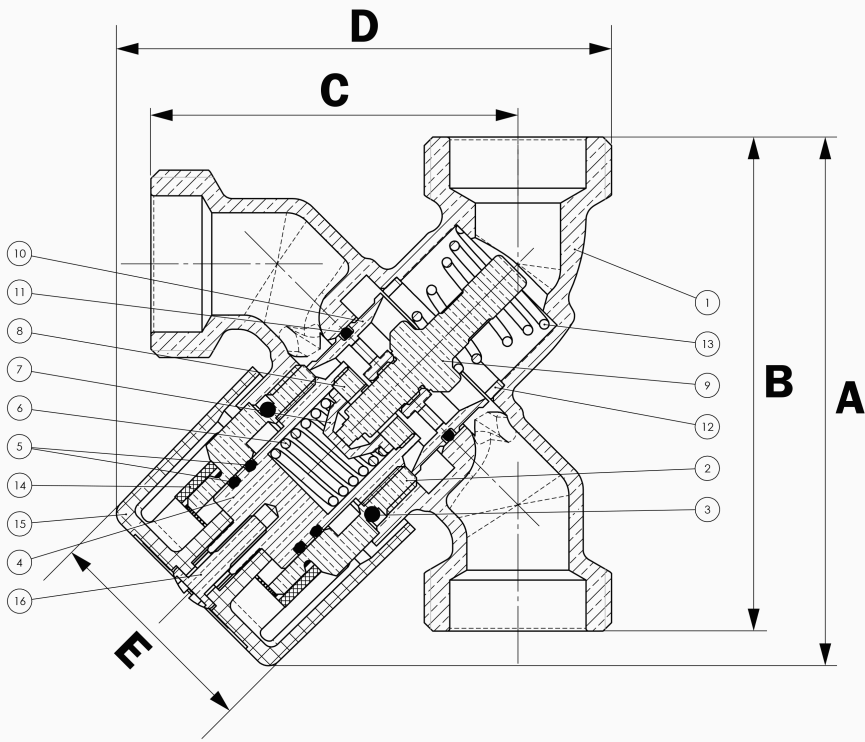
#### Certifications

Certified to NSF/ANSI/CAN 61 & 372, ASSE  
 1017, CSA B125.3 - Applies to body  
 H-70000W-Y

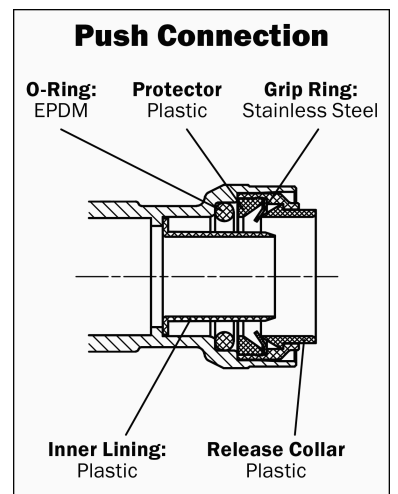
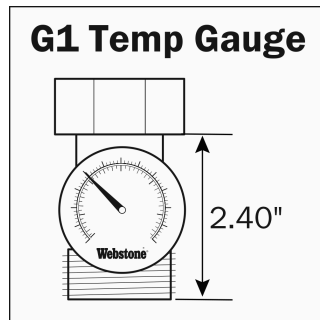
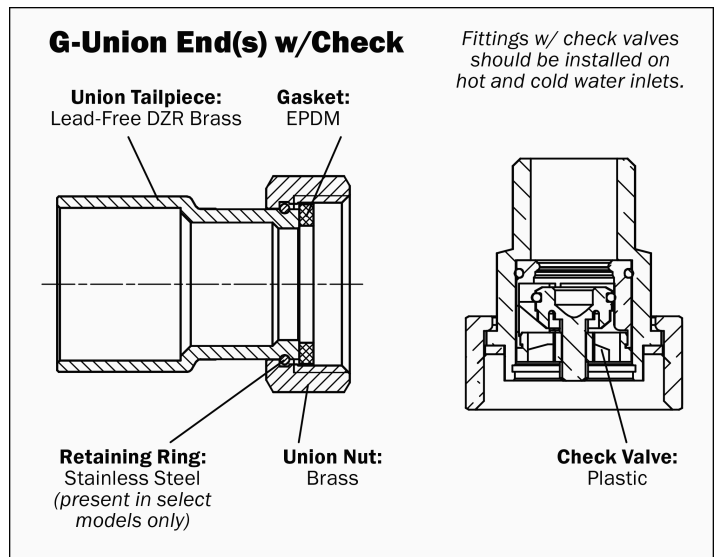


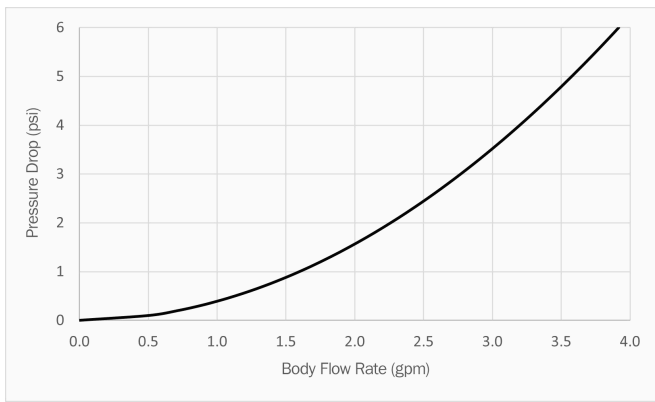
Size (in)	Item#	Weight (lbs)	CTN Qty	Case Qty	A	B	C	D	E	Cv	
<b>F1807 PEX</b>										<b>150 PSI CWP Max</b>	<b>185°F Max</b>
1/2"	H-71202W-Y-TG	2.49	1	10	3.66	8.84	3.97	3.50	1.50	1.6	
3/4"	H-71203W-Y-TG	2.50	1	10	3.66	8.84	3.97	3.50	1.50	1.6	
<b>F1960 PEX</b>										<b>150 PSI CWP Max</b>	<b>185°F Max</b>
1/2"	H-73202W-Y-TG	2.33	1	10	3.66	8.94	4.02	3.50	1.50	1.6	
3/4"	H-73203W-Y-TG	2.33	1	10	3.66	9.42	4.26	3.50	1.50	1.6	
<b>FIP</b>										<b>150 PSI CWP Max</b>	<b>185°F Max</b>
1/2"	H-72202W-Y-TG	2.65	1	10	3.66	8.82	3.96	3.50	1.50	1.6	
3/4"	H-72203W-Y-TG	2.67	1	10	3.66	8.72	3.91	3.50	1.50	1.6	
1"	H-72204W-Y-TG	2.94	1	10	3.66	8.84	3.97	3.50	1.50	1.6	
<b>MIP</b>										<b>150 PSI CWP Max</b>	<b>185°F Max</b>
1/2"	H-74202W-Y-TG	2.35	1	10	3.66	9.04	4.07	3.50	1.50	1.6	
3/4"	H-74203W-Y-TG	2.35	1	10	3.66	9.02	4.06	3.50	1.50	1.6	
1"	H-74204W-Y-TG	2.74	1	10	3.66	9.10	4.10	3.50	1.50	1.6	
<b>Press</b>										<b>150 PSI CWP Max</b>	<b>185°F Max</b>
1/2"	H-78202W-Y-TG	2.46	1	10	3.66	10.24	4.67	3.50	1.50	1.6	
3/4"	H-78203W-Y-TG	2.65	1	10	3.66	10.58	4.84	3.50	1.50	1.6	
1"	H-78204W-Y-TG	2.69	1	10	3.66	11.06	5.08	3.50	1.50	1.6	
<b>Push</b>										<b>150 PSI CWP Max</b>	<b>185°F Max</b>
1/2"	H-76202W-Y-TG	2.56	1	10	3.66	9.14	4.12	3.50	1.50	1.6	
3/4"	H-76203W-Y-TG	2.68	1	10	3.66	9.44	4.27	3.50	1.50	1.6	
<b>SWT</b>										<b>150 PSI CWP Max</b>	<b>185°F Max</b>
1/2"	H-75202W-Y-TG	2.35	1	10	3.66	8.62	3.86	3.50	1.50	1.6	
3/4"	H-75203W-Y-TG	2.39	1	10	3.66	9.10	4.10	3.50	1.50	1.6	
1"	H-75204W-Y-TG	2.65	1	10	3.66	9.32	4.21	3.50	1.50	1.6	





NO.	DESCRIPTION	MATERIAL
1	Body	LF DZR Brass
2	Cap	LF Brass
3	O-Ring	EPDM
4	Spindle	LF Brass
5	O-Ring	EPDM
6	Spindle Spring	Stainless Steel
7	Small Piston	LF Brass
8	Metal Ring	LF Brass
9	Element	Wax Filled copper
10	Piston	LF Brass
11	O-ring	EPDM
12	Gasket	PTFE
13	Spring	Stainless Steel
14	Locking Ring	Resin
15	Yellow Cap	Plastic
16	Screw	Steel
17	G-Union Ends w/Check	See Inset
18	Push Connection	See Inset
19	G1 Temp Gauge	See Inset





Hot Inlet Temperature Range	120 - 185°F (49 - 85°C)
Cold Inlet Temperature Range	39 - 80°F (4 - 27°C)
Outlet Temperature Stability <sup>1</sup>	± 5°F (3°C)
Working Pressure Range	30 - 150 psi (2 - 10 bar)
Minimum Temperature Differential	20°F (11°C)
Between Hot Supply and Mixed Outlet <sup>2</sup>	
Maximum Inlet Pressure Ratio <sup>3</sup>	2:1
Minimum Flow Rate <small>for optimal performance</small>	0.5 gpm (2 L/min)
C <sub>v</sub>	1.6
1. As tested in accordance with ASSE 1017.	
2. Required minimum temperature difference between the mixed outlet and the hot supply to enable the valve to function correctly and ensure automatic reduction of outlet flow in the event of cold supply failure.	
3. Maximum permitted variation in Hot/Cold or Cold/Hot supply pressure in order to control the outlet temperature to within ± 5°F. Excessive fluctuation in supply pressures may cause outlet temperature to be outside of specified tolerance.	

Specifications: Designed for use with water, oil, glycol mix in residential or commercial plumbing and heating systems. Threaded (NPT) ends comply with ANSI B1.20.1. Solder joint temperature ratings are per ASME B16.18 Annex A for 95-5 solder. Do not silver braze or overheat valves when soldering. EPDM o-rings for press ends. PEX ends are in accordance with the referenced ASTM specification; refer to tubing manufacturer for installation instructions. Push ends suitable for use with copper, CPCV or PEX tubing and feature a fully removable grip assembly.

