

# INSTALLATION INFORMATION

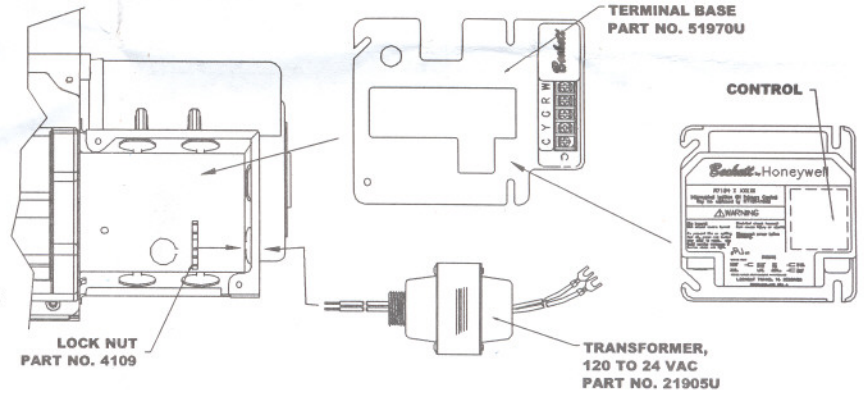
**BECKETT A-C READY KIT**  
 Part Nos. 7520U / 51950U /  
 51970U / 21905U

## Notice Special Requirements

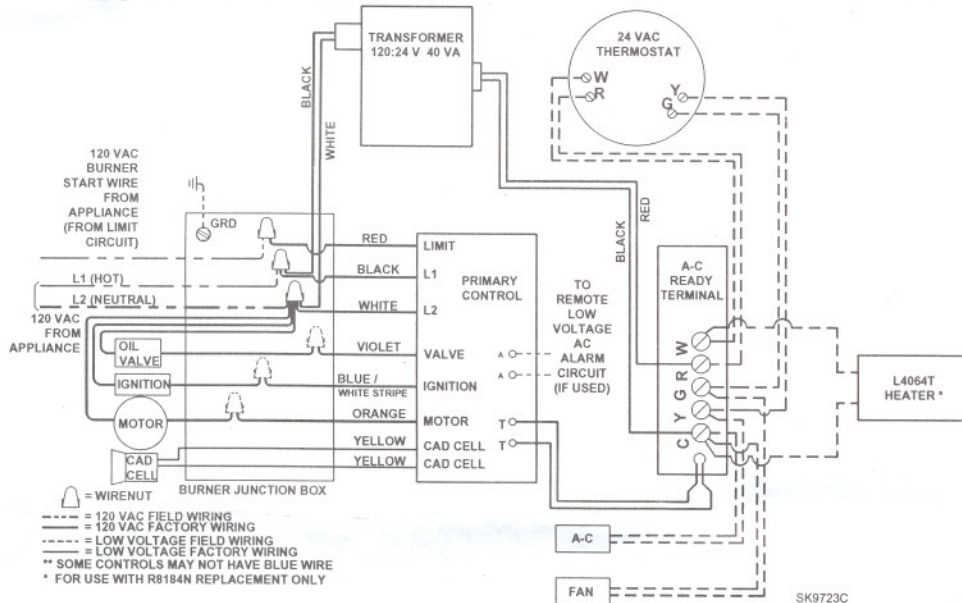
**CAUTION:** This Equipment must be installed, adjusted and started only by a qualified service technician – an individual or agency, licensed and experienced with all codes and ordinances, who is responsible for the installation and adjustment of the equipment. The installation must comply with all local codes and ordinances and with the National Fire Protection Standard for Liquid Fuel Equipment, NFPA 31 (or CSA B139-M91).

## Installation Instructions

1. Disconnect power before servicing burner.
2. Remove existing control.
3. Remove wiring box knock-out.
4. Insert white & black wires of transformer, Part No. 21905, thru hole & install transformer using supplied lock nut.
5. Place baseplate on wiring box. Pull wires thru main opening.
6. Wire control & install control over baseplate & onto wiring box.
7. Wire transformer to A-C Ready terminals as shown.
8. Wire A-C Ready terminals to T-T terminals on control as shown.



## Wiring Requirements for New Installation, Or Direct Replacement of either R8184M or R8184N



## Replacement Parts

Description	Part Number
Honeywell R8184M or R8184N Replacement	7520U (Includes R7184A and 51950U)
A-C Ready Kit	51950U (Includes 51970U and 21905U)
Terminal Base only	51970U
Transformer only	21905U

**R.W. BECKETT CORPORATION**  
 P.O. Box 1289  
 Elyria, Ohio 44036  
 1-800-645-2876

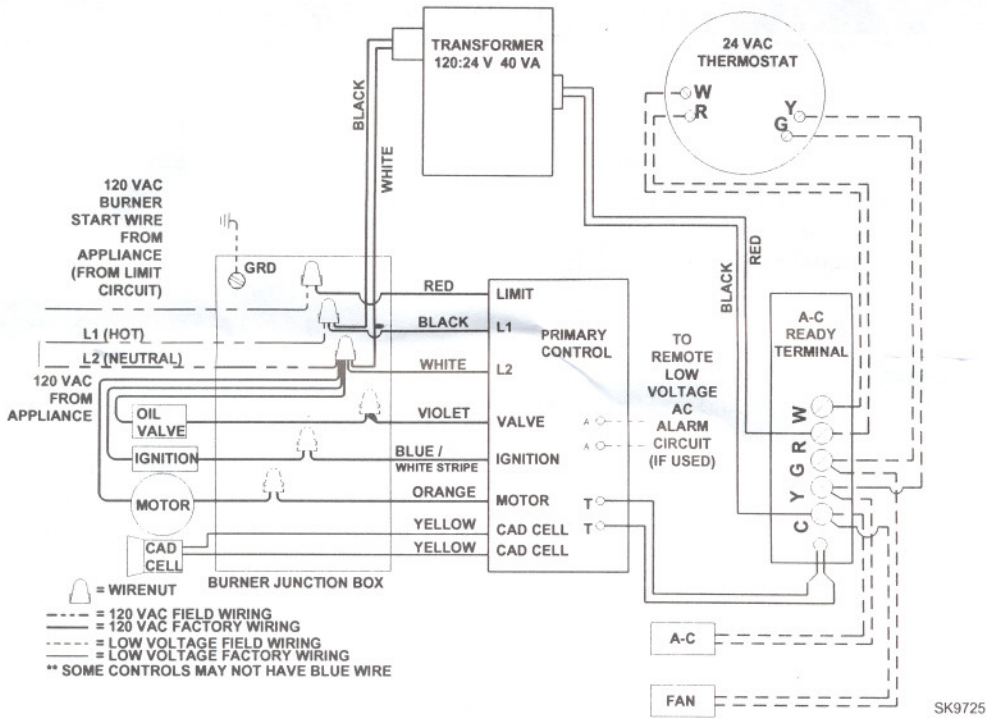
**R.W. BECKETT CANADA, LTD**  
 430 Laird, Unit 3  
 Guelph, Ontario N1G 3X7  
 1-800-665-6972



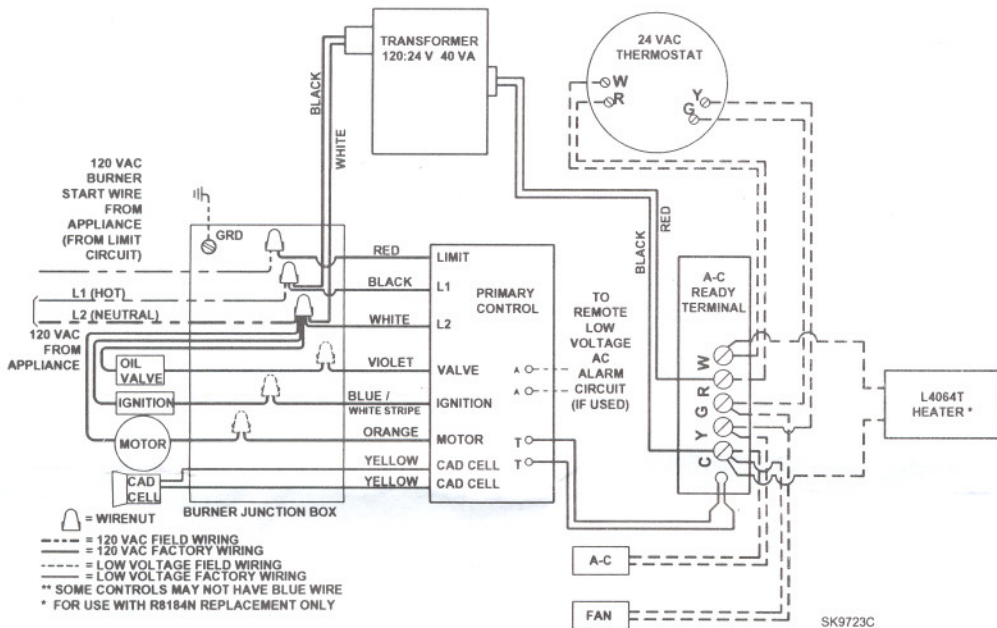
Printed in the U.S.A. 2/21/06  
 RWB 61566 R02



# Wiring Requirements for R8184M



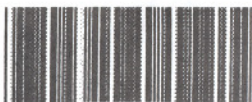
# Wiring Requirements for R8184N



R.W. BECKETT CORPORATION  
 P.O. Box 1289  
 Elyria, Ohio 44036  
 1-800-645-2876

R.W. BECKETT CANADA, LTD  
 430 Laird, Unit 3  
 Guelph, Ontario N1G 3X7  
 1-800-665-6972

Printed in the U.S.A. 2/21/06  
 RWB 61566 R02



\*61566\*



0 45558 08129 3