



# ASME Expansion Tanks

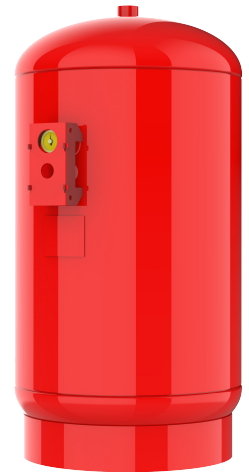
## Series D pre-charged diaphragm tanks

### Description

Series D expansion tanks are ASME rated pre-charged diaphragm-type pressure vessels. The Series D tank is designed to absorb the expansion forces of heating/cooling system water while maintaining proper system pressurization under varying operating conditions. The heavy duty diaphragm separates system water from the tank air charge thereby eliminating waterlogging problems.

Designed for closed hydronic heating and cooling systems

- Increases system performance
- Reduces oxygen corrosion
- Prevents waterlogging
- Tank sizes: 8-211 gallons
- Suitable for both horizontal and vertical installation
- Signed and built according to ASME Section VIII, Division 1 standards
- 125 PSI standard maximum working pressure
- 175 PSI and 250 PSI maximum working pressures also available
- Maximum operating temperature: 240°F (115°C)
- Integrated bladder integrity monitor on all models
- Seismic restraints available
- Sight glass available



**Bell & Gossett**  
xylem

# Series D diaphragm tanks

## Operating data

Maximum working pressure: 125 PSI (862 kPa)

Maximum operating temperature: 240°F (115°C)

## Materials of construction

Shell: Carbon steel

Diaphragm: Heavy duty butyl rubber

System connection: Forged steel

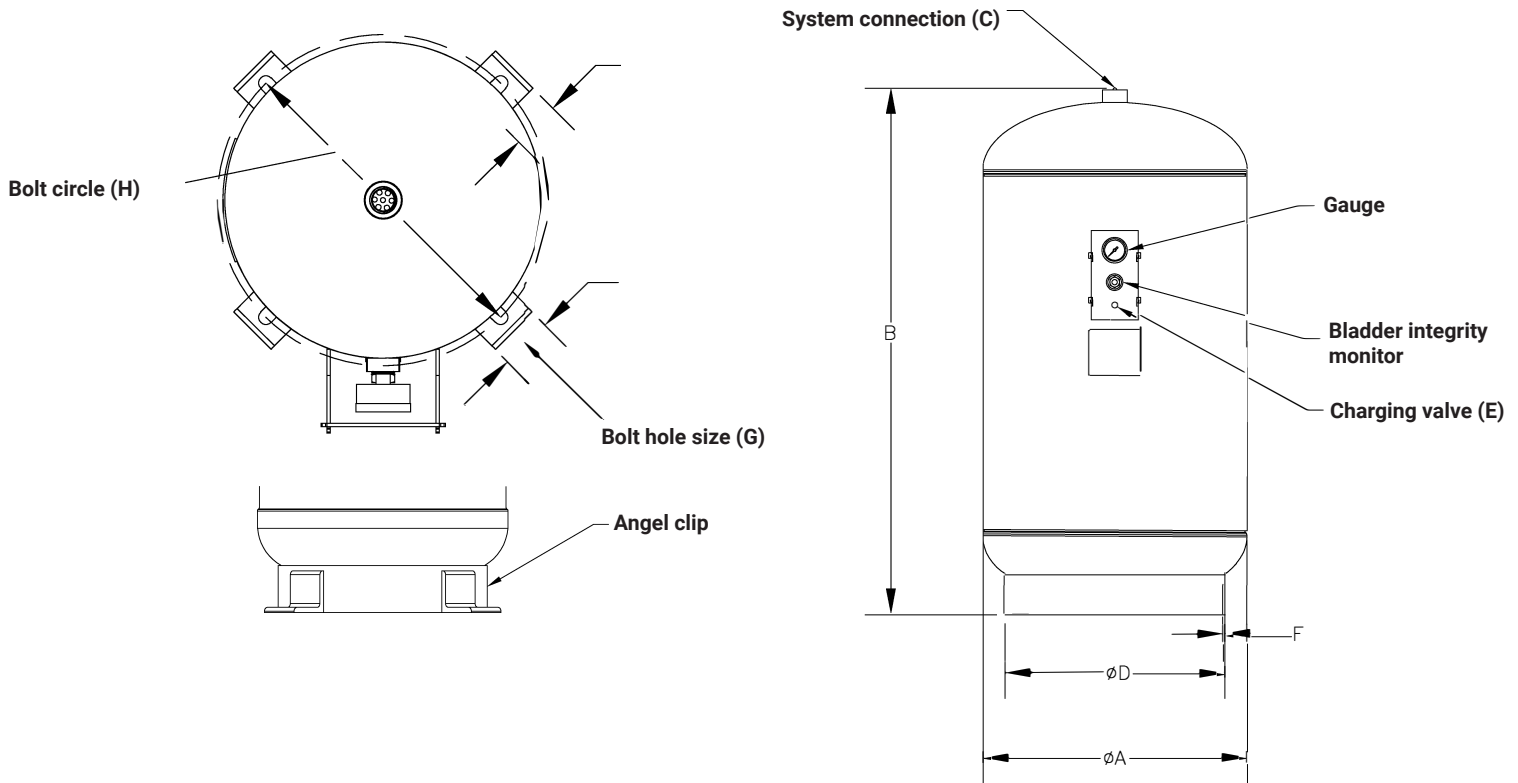
Designed and constructed per ASME  
Section VIII, Division 1

## Dimensions

Model	Tank and acceptance		A	B	C (NPTM)	E Charging valve	D	F	G	H	I	J	Ship wt.	Flooded wt.*
	Gallons (liters)													
D-15	7.8 (30)	6.3 (24)	12 (305)	19 (483)	3/4 (19)	.302"-32 NC	10 (254)	0.14 (4)	9/16 (14)	12 (305)	2 (51)	2 (51)	42 (19)	107 (49)
D-20	11 (42)	8.8 (33)	12 (305)	25 (638)	3/4 (19)	.302"-32 NC	10 (254)	0.14 (4)	9/16 (14)	12 (305)	2 (51)	2 (51)	52 (24)	144 (65)
D-40	25 (95)	20.2 (76)	16 (406)	33 (838)	1 (19)	.302"-32 NC	14 (356)	0.14 (4)	9/16 (14)	16 (406)	2 (51)	2 (51)	84 (38)	292 (132)
D-60	35 (132)	28 (106)	16 (406)	44 (1,118)	1 (19)	.302"-32 NC	14 (356)	0.14 (4)	9/16 (14)	16 (406)	2 (51)	2 (51)	97 (44)	389 (176)
D-80	45 (170)	36 (136)	20 (508)	38 (965)	1 (19)	.302"-32 NC	18 (457)	0.14 (4)	9/16 (14)	20 (508)	2 (51)	2 (51)	148 (67)	523 (237)
D-100	60 (227)	48.5 (184)	20 (508)	49 (1,245)	1 (19)	.302"-32 NC	18 (457)	0.14 (4)	9/16 (14)	20 (508)	2 (51)	2 (51)	175 (79)	675 (306)
D-120	70 (265)	56.5 (214)	24 (610)	46 (1,168)	1 1/2 (38)	.302"-32 NC	22 (559)	0.14 (4)	9/16 (14)	24 (610)	2 (51)	2 (51)	259 (117)	842 (382)
D-144	80 (303)	65 (246)	24 (610)	49 (1,245)	1 1/2 (38)	.302"-32 NC	22 (559)	0.14 (4)	9/16 (14)	24 (610)	2 (51)	2 (51)	268 (122)	934 (424)
D-180	90 (341)	73 (276)	24 (610)	52 (1,321)	1 1/2 (38)	.302"-32 NC	22 (559)	0.14 (4)	9/16 (14)	24 (610)	2 (51)	2 (51)	283 (128)	1,033 (468)
D-200	115 (435)	93 (352)	24 (610)	66 (1,676)	1 1/2 (38)	.302"-32 NC	22 (559)	0.14 (4)	9/16 (14)	24 (610)	2 (51)	2 (51)	325 (147)	1,283 (582)
D-240	140 (530)	113.5 (430)	24 (610)	78 (1,981)	1 1/2 (38)	.302"-32 NC	22 (559)	0.14 (4)	9/16 (14)	25 (635)	3 (76)	3 (76)	362 (164)	1,528 (693)
D-260	158 (598)	128 (485)	30 (762)	63 (1,600)	1 1/2 (38)	.302"-32 NC	24 (610)	0.14 (4)	9/16 (14)	27 (686)	3 (76)	3 (76)	591 (268)	1,907 (865)
D-280	211 (799)	171 (647)	30 (762)	81 (2,057)	1 1/2 (38)	.302"-32 NC	24 (610)	0.14 (4)	9/16 (14)	27 (686)	3 (76)	3 (76)	752 (341)	2,510 (1,138)

Dimensions subject to change. Not to be used for construction purposes.  
Refer to submittals for optional seismic restraints.

\*Approximate weight 100% full occurs if bag fails or if air charge is lost.  
No lifting ring.



Xylem Inc.  
8200 N. Austin Avenue  
Morton Grove, Illinois 60053

Phone: (847) 966-3700  
Fax: (847) 965-8379  
[www.xylem.com/bellgossett](http://www.xylem.com/bellgossett)

Subject to change without notice. All information presented herein is believed reliable and in accordance with accepted engineering practices. Xylem makes no warranties as to the completeness of this information. Users are responsible for evaluating individual product suitability for specific applications. Xylem assumes no liability whatsoever for any special, indirect or consequential damages arising from the sale, resale or misuse of its products.

© 2025 Xylem and Bell & Gossett are trademarks of Xylem, Inc. or one of its subsidiaries. All other trademarks are the property of their respective owners.

B-A-347D 4/2025

**xylem**  
Let's Solve Water