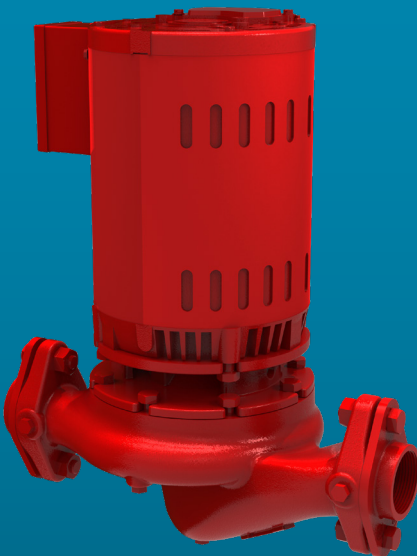


xylem

Series e-90

Closed Coupled In-Line Centrifugal Pumps
Replacement Parts

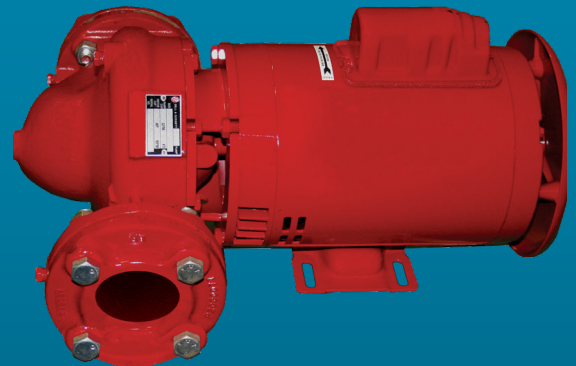
e-90ECM



e-90E Smart Pump

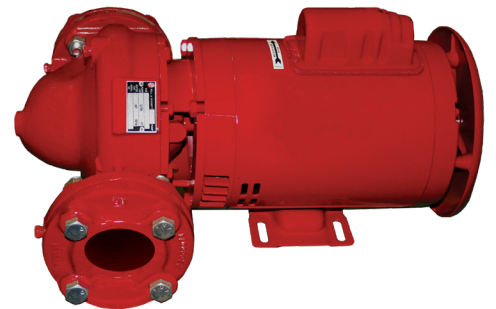
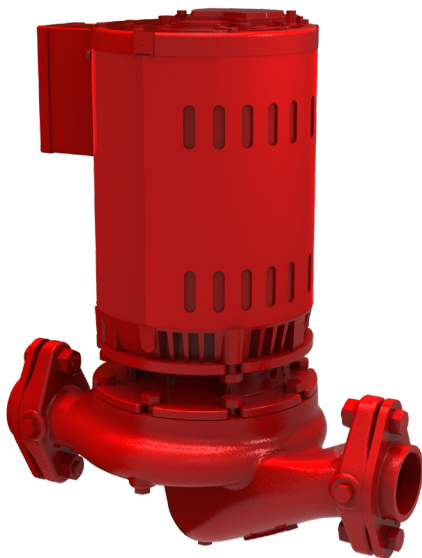


e-90 (Standard)



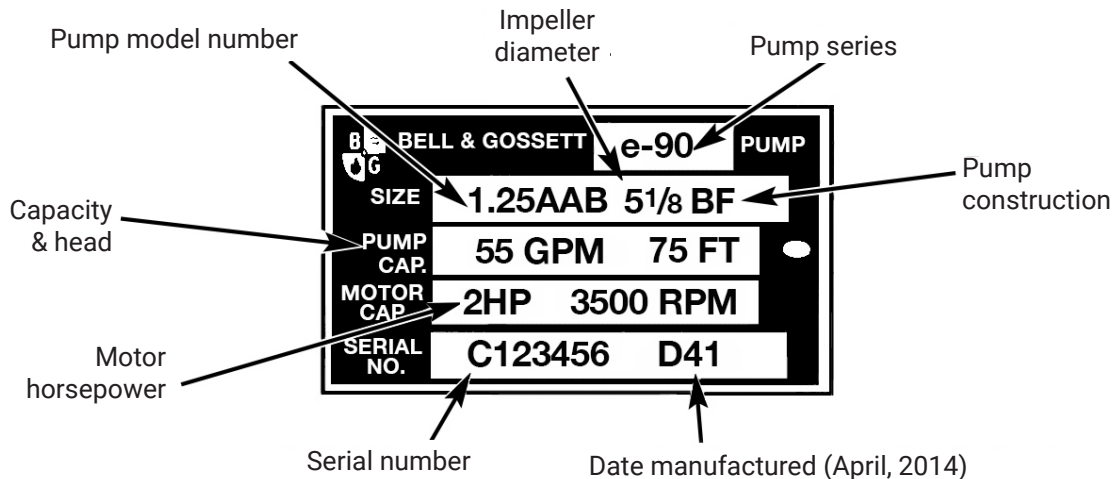
Index

How to use this parts list.....	1
e-90/e-90ECM exploded view	2
Series e-90E smart pump exploded view	3
Standard size pump designations	4
1AAB pump parts.....	6
1.25 AAB pump parts.....	7
1.5 AAB pump parts.....	8
2AAB pump parts.....	9
3AAB pump parts.....	10
2AAC pump parts.....	11
1.5AB pump parts	12
2AB pump parts	13



How to use this parts list

The pump nameplate identifies the pump by pipe size, pump construction and impeller diameter as shown below.

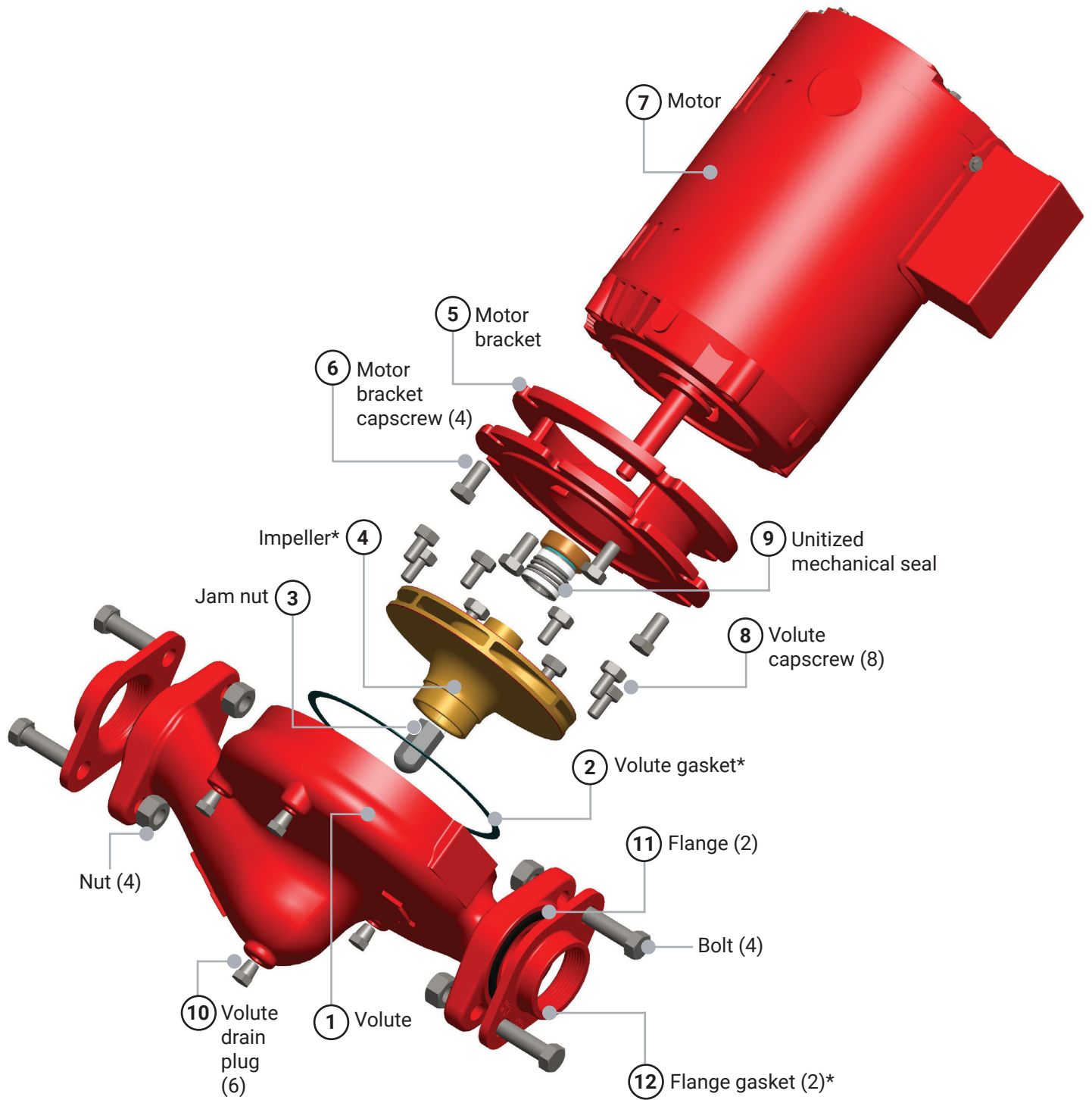


The nameplate above identifies the pump as a Series e-90, 1.25AAB in bronze fitted (BF) construction. The impeller diameter is 5.125" and is capable of pumping 55 GPM at 75 feet. The motor horsepower is 2, the RPM is 3500. The serial number specifically identifies the unit for future reference. **DO NOT REMOVE THE NAMEPLATE.** It is important when ordering replacement parts to furnish complete nameplate data.

The following procedure will result in proper parts selection:

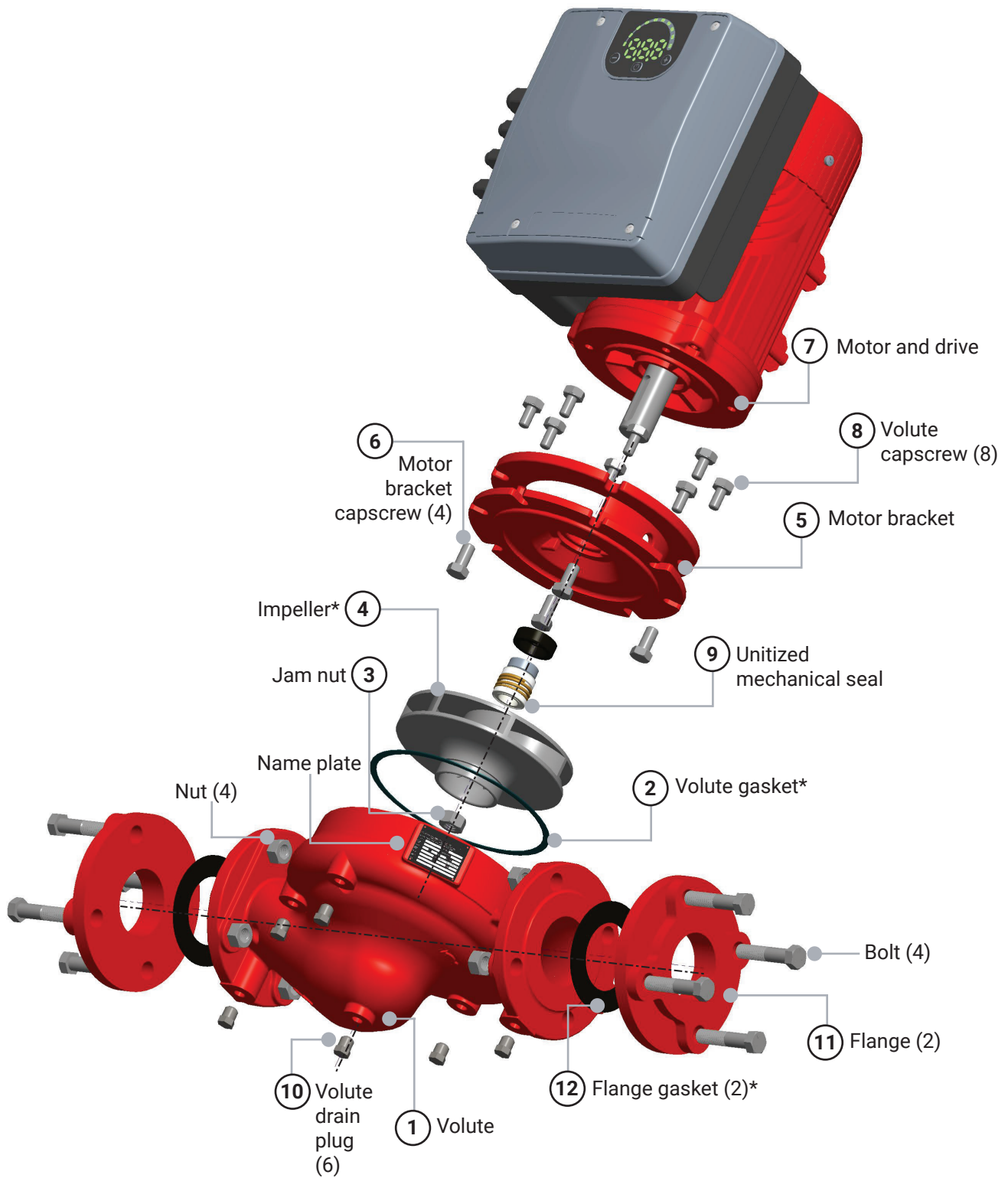
1. Determine from the nameplate the pump size, pump construction and impeller diameter.
2. Refer to the index for the page number of the parts breakdown for the specific size pump.
3. Find the proper column in the parts breakdown for the pump construction involved.
4. Select part numbers, using the drawing on page 4 for identification.
5. Always give complete motor nameplate data when ordering replacement motors.

e-90/e-90ECM exploded view



* Factory recommended spare parts

Series e-90E smart pump exploded view



* Factory recommended spare parts

Standard size designations

Pump size	Model number	Motor	HP	Voltage	PH	RPM	Frame	Impeller*	Impeller diameter	Jam nut kit	Seal kit
1AAB	e9001S	SM2093	0.25	115/208-230	1	1725	56J	P2004347	4.5"	P2004389	186094LF
	e9002S	SM2094	0.33	115/208-230	1			P2004344	5"		
	e9003S	SM2081	0.50	115/208-230	1			P2003625	5.25"		
	e9003T	SM2108	0.50	208-230/460	3			P2004348	4.25"		
	e9020S	SM2085	1	115/208-230	1	3450		P2004349	3.75"		
	e9020T	SM2103	1	208-230/460	3			P2004349	3.75"		
	e9021S	SM2087	1.5	115/208-230	1			P2004348	4.25"		
	e9021T	SM2104	1.5	208-230/460	3			P2004348	4.25"		
	e9022S	SM2088	2	115/208-230	1			P2004346	4.75"		
	e9022T	SM2105	2	208-230/460	3			P2004346	4.75"		
	e9023S	SM2089	3	208-230	1			P2003625	5.25"		
	e9023T	SM2106	3	208-230/460	3			P2003625	5.25"		
1.25AAB	e9004S	SM2093	0.25	115/208-230	1	1725	56J	P2004348	4.25"	P2004389	186094LF
	e9005S	SM2094	0.33	115/208-230	1			P2004347	4.5"		
	e9006S	SM2081	0.50	115/208-230	1			P2003625	5.25"		
	e9006T	SM2108	0.50	208-230/460	3			P2003625	5.25"		
	e9025S	SM2087	1.5	115/208-230	1	3450		P2004349	3.75"		
	e9025T	SM2104	1.5	208-230/460	3			P2004349	3.75"		
	e9026S	SM2088	2	115/208-230	1			P2004348	4.25"		
	e9026T	SM2105	2	208-230/460	3			P2004348	4.25"		
	e9027S	SM2089	3	208-230	1			P2004346	4.75"		
	e9027T	SM2106	3	208-230/460	3			P2004346	4.75"		
e9028T	SM2107	5	208-230/460	3	P2003625	5.25"					
1.5AAB	e9007S	SM2093	0.25	115/208-230	1	1725	56J	P2004355	4"	P2004389	186094LF
	e9008S	SM2094	0.33	115/208-230	1			P2004354	4.375"		
	e9009S	SM2081	0.50	115/208-230	1			P2004352	5"		
	e9009T	SM2108	0.50	208-230/460	3			P2004352	5"		
	e9010S	SM2083	0.75	115/208-230	1	3450		P2003626	5.25"		
	e9010T	SM2109	0.75	208-230/460	3			P2003626	5.25"		
	e9029S	SM2087	1.5	115/208-230	1			P2004356	3.25"		
	e9029T	SM2104	1.5	208-230/460	3			P2004356	3.25"		
	e9030S	SM2088	2	115/208-230	1			P2004355	4"		
	e9030T	SM2105	2	208-230/460	3			P2004355	4"		
	e9031S	SM2089	3	208-230	1			P2004353	4.5"		
	e9031T	SM2106	3	208-230/460	3			P2004353	4.5"		
e9032T	SM2107	5	208-230/460	3	P2003626	5.25"					
2AAB	e9011S	SM2094	0.33	115/208-230	1	1725	56J	P2004363	3.5"	P2004389	186094LF
	e9012S	SM2081	0.50	115/208-230	1			P2004360	4.25"		
	e9012T	SM2108	0.50	208-230/460	3			P2004360	4.25"		
	e9013S	SM2083	0.75	115/208-230	1			P2004358	4.75"		
	e9013T	SM2109	0.75	208-230/460	3	P2004358		4.75"			
	e9014S	SM2097	1	115/208-230	1	3450		P2003627	5.25"		
	e9014T	SM2110	1	208-230/460	3			P2003627	5.25"		
	e9033S	SM2088	2	115/208-230	1			P2004364	3.38"		
	e9033T	SM2105	2	208-230/460	3			P2004364	3.38"		
	e9034S	SM2089	3	208-230	1			P2004362	3.75"		
e9034T	SM2106	3	208-230/460	3	P2004363		3.5"				
e9035T	SM2107	5	208-230/460	3	P2004359	4.5"					
3AAB	e9015S	SM2094	0.33	115/208-230	1	1725	56J	P2004363	3.5"	P2004389	186094LF
	e9016S	SM2081	0.50	115/208-230	1			P2004361	4"		
	e9016T	SM2108	0.50	208-230/460	3			P2004361	4"		
	e9017S	SM2083	0.75	115/208-230	1			P2003629	4.69"		
	e9017T	SM2109	0.75	208-230/460	3	P2003629		4.69"			
	e9018S	SM2097	1	115/208-230	1	3450		P2003627	5.25"		
	e9018T	SM2110	1	208-230/460	3			P2003627	5.25"		
	e9036S	SM2089	3	208-230	1			P2004362	3.75"		
	e9036T	SM2106	3	208-230/460	3			P2004362	3.75"		
	e9037T	SM2107	5	208-230/460	3			P2004360	4.25"		

Standard size designations

Pump size	Model number	Motor	HP	Voltage	PH	RPM	Frame	Impeller*	Impeller diameter	Jam nut kit	Seal kit
1.5AB	e9047S	SM2081	0.5	115/208-230	1	1725	56J	P2004375	5.125"	P2004395	186094LF
	e9047T	SM2108	0.5	208-230/460	3			P2004375	5.125"		
	e9048S	SM2083	0.75	115/208-230	1			P2004374	5.75"		
	e9048T	SM2109	0.75	208-230/460	3			P2004374	5.75"		
	e9049S	SM2097	1	115/208-230	1			P2004373	6.125"		
	e9049T	SM2110	1	208-230/460	3			P2004373	6.125"		
	e9060S	SM2090	1.5	115/208-230	1			P2003631	7"		
e9060T	SM2111	1.5	208-230/460	3	P2003631	7"					
2AB	e9061S	SM2083	0.75	115/208-230	1	1725	56J	P2004378	5.25"	P2004395	186094LF
	e9061T	SM2109	0.75	208-230/460	3			P2004378	5.25"		
	e9062S	SM2097	1	115/208-230	1			P2004377	5.75"		
	e9062T	SM2110	1	208-230/460	3			P2004377	5.75"		
	e9063S	SM2090	1.5	115/208-230	1			P2004376	6.375"		
	e9063T	SM2111	1.5	208-230/460	3			P2004376	6.375"		
	e9064S	SM2091	2	115/208-230	1			P2003632	7"		
e9064T	SM2112	2	208-230/460	3	P2003632	7"					
2AAC	e9038S	SM2093	0.25	115/208-230	1	1725	56J	P2004370	3.875"	P2004389	186094LF
	e9039S	SM2094	0.333	208-230/460	3			P2005851	4"		
	e9040S	SM2081	0.5	115/208-230	1			P2004367	4.75"		
	e9040T	SM2108	0.5	208-230/460	3			P2004367	4.75"		
	e9041S	SM2083	0.75	115/208-230	1			P2003628	5.25"		
	e9041T	SM2109	0.75	208-230/460	3			P2003628	5.25"		
	e9042S	SM2085	1	115/208-230	1			P2004372	3.25"		
	e9042T	SM2103	1	208-230/460	3			P2004372	3.25"		
	e9043S	SM2087	1.5	115/208-230	1			P2004371	3.75"		
	e9043T	SM2104	1.5	208-230/460	3			P2004371	3.75"		
	e9044S	SM2088	2	115/208-230	1			P2004370	3.875"		
	e9044T	SM2105	2	208-230/460	3			P2004370	3.875"		
	e9045S	SM2089	3	115/208-230	1			P2004368	4.375"		
e9045T	SM2106	3	208-230/460	3	P2004368	4.375"					
e9046T	SM2107	5	208-230/460	3	P2004366	5.125"					

Pump size	Model number	Motor	HP	Voltage	PH	RPM	Frame	Impeller*	Impeller diameter	Jam nut kit	Seal kit
1AAB	e9022M	107239630NR	2	208-230	1	3600	56J	P2004347	4.5"	P2004391	186094LF
	e9022M	107239940NR	2	208-230/460	3			P2004347	4.5"	P2004390	
	e9023M	107239920NR	3	460	3			P2003625	5.25"	P2004389	
1.25AAB	e9026M	107239630NR	2	208-230	1	3600	56J	P2005929	4.125"	P2004394	186094LF
	e9026M	107239940NR	2	208-230/460	3			P2005929	4.125"	P2004393	
	e9027M	107239920NR	3	460	3			P2004346	4.75"	P2004392	
1.5AAB	e9030M	107239630NR	2	208-230	1	3600	56J	P2005937	3.75"	P2004397	186094LF
	e9030M	107239940NR	2	208-230/460	3			P2005937	3.75"	P2004396	
	e9031M	107239920NR	3	460	3			P2005935	4.25"	P2004395	
2AAB	e9033M	107239630NR	2	208-230	1	3600	56J	P2004365	3.25"	P2004400	186094LF
	e9033M	107239940NR	2	208-230/460	3			P2004365	3.25"	P2004399	
	e9034M	107239920NR	3	460	3			P2004362	3.75"	P2004398	
2AAC	e9044M	107239630NR	3	208-230	1	3600	56J	P2004371	3.75"	P2004403	186094LF
	e9044M	107239940NR	2	208-230/460	3			P2004371	3.75"	P2004402	
	e9045M	107239920NR	2	460	3			P2004369	4.25"	P2004401	
3AAB	e9035M	107239630NR	2	208-230	1	3600	56J	P2004365	3.25"	P2004406	186094LF
	e9035M	107239940NR	2	208-230/460	3			P2004365	3.25"	P2004405	
	e9036M	107239920NR	3	460	3			P2004362	3.75"	P2004404	

1AAB pump parts

Parts common to both pump types

Item number	Description	Pump construction	
		Bronze fitted	All bronze
1	Volute	P57081	P2000037
10	Volute drain plug (6)	P39020	P39470
8	Volute capscrew (8)	P10359	P10359
2	Volute gasket	P57410	P57410
11	Flange (2)	P01510	P2004622
12	Flange gasket	P03200	P03200
6	Motor bracket capscrew (4)	DJ0063	DJ0063
4	Impeller (state diameter) †	P2003625	P2003625
3	Jam nut kit	P2004389	P2004389
9	Seal - std *	186094LF	186094LF
9	Seal - opt **	186095LF	186085LF
9	Seal - opt***	186096LF	186096LF
5	Motor bracket	P2001335	P2001318
5	Motor bracket - F construction	P2001360	P2001359

* EPR/carbon/silicon-carbide

** FKM/carbon/silicon carbide

*** Graphite/silicon-carbide (standard seal for e-90ECM pumps)

† Jam nut kit must be purchased with all replacement impellers

Motor selection chart

HP	1-Phase 1800 RPM		3-Phase 1800 RPM	1-Phase 3600 RPM	3-Phase 3600 RPM	1-Phase smart motor	3-Phase smart motor
	ECM	Standard					
¼	—	SM2093	—	—	—	—	—
⅓	—	SM2094	—	—	—	—	—
½	SM3118	SM2081	SM2108	—	—	—	—
¾	—	—	—	—	—	—	—
1	—	—	—	SM2085	SM2103	—	—
1½	—	—	—	SM2087	SM2104	—	—
2	—	—	—	SM2088	SM2105	107239630NR	107239940NR
3	—	—	—	SM2089	SM2106	—	107239920NR

1.25AAB pump parts

Parts common to both pump types

Item number	Description	Pump construction	
		Bronze fitted	All bronze
1	Volute	P57081	P2000037
10	Volute drain plug (6)	P39020	P39470
8	Volute capscrew (8)	P10359	P10359
2	Volute gasket	P57410	P57410
11	Flange (2)	P2004624	P2004630
12	Flange gasket	P03200	P03200
6	Motor bracket capscrew (4)	DJ0063	DJ0063
4	Impeller (state diameter)†	P2003625	P2003625
3	Jam nut kit	P2004389	P2004389
9	Seal - std *	186094LF	186094LF
9	Seal - opt **	186095LF	186095LF
9	Seal - opt***	186096LF	186096LF
5	Motor bracket	P2001335	P2001318
5	Motor bracket - F construction	P2001360	P2001359

* EPR/carbon/silicon-carbide

** FKM/carbon/silicon carbide

*** Graphite/silicon-carbide (standard seal for e-90ECM pumps)

† Jam nut kit must be purchased with all replacement impellers

Motor selection chart

HP	1-Phase 1800 RPM		3-Phase 1800 RPM	1-Phase 3600 RPM	3-Phase 3600 RPM	1-Phase smart motor	3-Phase smart motor
	ECM	Standard					
¼	—	SM2093	—	—	—	—	—
⅓	—	SM2094	—	—	—	—	—
½	SM3118	SM2081	SM2108	—	—	—	—
¾	—	—	—	—	—	—	—
1	—	—	—	—	—	—	—
1½	—	—	—	SM2087	SM2104	—	—
2	—	—	—	SM2088	SM2105	107239630NR	107239940NR
3	—	—	—	SM2089	SM2106	—	107239920NR
5	—	—	—	—	SM2107	—	—

1.5AAB pump parts

Parts common to both pump types

Item number	Description	Pump construction	
		Bronze fitted	All bronze
1	Volute	P57151	P2000040
10	Volute drain plug (6)	P39020	P39470
8	Volute capscrew (8)	P10359	P10359
2	Volute gasket	P57410	P57410
11	Flange (2)	P03410	P2004634
12	Flange gasket	P03350	P03350
6	Motor bracket capscrew (4)	DJ0063	DJ0063
4	Impeller (state diameter) †	P2003626	P2003626
3	Jam nut kit	P2004389	P2004389
9	Seal - std *	186094LF	186094LF
9	Seal - opt **	186095LF	186095LF
9	Seal - opt***	186096LF	186096LF
5	Motor bracket	P2001335	P2001318
5	Motor bracket - F construction	P2001360	P2001359

* EPR/carbon/silicon-carbide

** FKM/carbon/silicon carbide

*** Graphite/silicon-carbide (standard seal for e-90ECM pumps)

† Jam nut kit must be purchased with all replacement impellers

Motor selection chart

HP	1-Phase 1800 RPM		3-Phase 1800 RPM	1-Phase 3600 RPM	3-Phase 3600 RPM	1-Phase smart motor	3-Phase smart motor
	ECM	Standard					
¼	—	SM2093	—	—	—	—	—
⅓	—	SM2094	—	—	—	—	—
½	—	SM2081	SM2108	—	—	—	—
¾	—	SM2083	SM2109	—	—	—	—
1	SM3119	—	—	—	—	—	—
1½	—	—	—	SM2087	SM2104	—	—
2	—	—	—	SM2088	SM2105	107239630NR	107239940NR
3	—	—	—	SM2089	SM2106	—	107239920NR
5	—	—	—	—	SM2107	—	—

2AAB pump parts

Parts common to both pump types

Item number	Description	Pump construction	
		Bronze fitted	All bronze
1	Volute	P57221	P2000043
10	Volute drain plug (6)	P39020	P39470
8	Volute capscrew (8)	P10359	P10359
2	Volute gasket	P57410	P57410
11	Flange (2)	F14200	P2004634
12	Flange gasket	P03480	P03480
6	Motor bracket capscrew (4)	DJ0063	DJ0063
4	Impeller (state diameter)†	P2003627	P2003627
3	Jam nut kit	P2004389	P2004389
9	Seal - std *	186094LF	186094LF
9	Seal - opt **	186095LF	186095LF
9	Seal - opt***	186096LF	186096LF
5	Motor bracket	P2001335	P2001318
5	Motor bracket - F construction	P2001360	P2001359

* EPR/carbon/silicon-carbide

** FKM/carbon/silicon carbide

*** Graphite/silicon-carbide (standard seal for e-90ECM pumps)

† Jam nut kit must be purchased with all replacement impellers

Motor selection chart

HP	1-Phase 1800 RPM		3-Phase 1800 RPM	1-Phase 3600 RPM	3-Phase 3600 RPM	1-Phase smart motor	3-Phase smart motor
	ECM	Standard					
¼	–	–	–	–	–	–	–
⅓	–	SM2094	–	–	–	–	–
½	–	SM2081	SM2108	–	–	–	–
¾	–	SM2083	SM2109	–	–	–	–
1	SM3119	SM2097	SM2110	–	–	–	–
1½	–	–	–	–	–	–	–
2	–	–	–	SM2088	SM2105	107239630NR	107239940NR
3	–	–	–	SM2089	SM2106	–	107239920NR
5	–	–	–	–	SM2107	–	–

3AAB pump parts

Parts common to both pump types

Item number	Description	Pump construction	
		Bronze fitted	All bronze
1	Volute	P08420	P2000014
10	Volute drain plug (6)	P39020	P39470
8	Volute capscrew (8)	P10359	P10359
2	Volute gasket	P57410	P57410
11	Flange (2)	F74000	P2004636
12	Flange gasket	P65131	P65131
6	Motor bracket capscrew (4)	DJ0063	DJ0063
4	Impeller (state diameter) †	P2003627	P2003627
3	Jam nut kit	P2004389	P2004389
9	Seal - std *	186094LF	186094LF
9	Seal - opt **	186095LF	186095LF
9	Seal - opt***	186096LF	186096LF
5	Motor bracket	P2001335	P2001318
5	Motor bracket - F construction	P2001360	P2001359

* EPR/carbon/silicon-carbide

** FKM/carbon/silicon carbide

*** Graphite/silicon-carbide (standard seal for e-90ECM pumps)

† Jam nut kit must be purchased with all replacement impellers

Motor selection chart

HP	1-Phase 1800 RPM		3-Phase 1800 RPM	1-Phase 3600 RPM	3-Phase 3600 RPM	1-Phase smart motor	3-Phase smart motor
	ECM	Standard					
¼	–	–	–	–	–	–	–
⅓	–	SM2094	–	–	–	–	–
½	–	SM2081	SM2108	–	–	–	–
¾	–	SM2083	SM2109	–	–	–	–
1	SM3119	SM2097	SM2110	–	–	–	–
1½	–	SM2087	SM2111	–	–	–	–
2	–	–	–	–	–	107239630NR	107239940NR
3	–	–	–	SM2089	SM2106	–	107239920NR
5	–	–	–	–	SM2107	–	–

2AAC pump parts

Parts common to both pump types

Item number	Description	Pump construction	
		Bronze fitted	All bronze
1	Volute	P57221	P2000043
10	Volute drain plug (6)	P39020	P39470
8	Volute capscrew (8)	P10359	P10359
2	Volute gasket	P57410	P57410
11	Flange (2)	F14200	P2004634
12	Flange gasket	P03480	P03480
6	Motor bracket capscrew (4)	DJ0063	DJ0063
4	Impeller (state diameter)†	P2003628	P2003628
3	Jam nut kit	P2004389	P2004389
9	Seal - std *	186094LF	186094LF
9	Seal - opt **	186095LF	186095LF
9	Seal - opt***	186096LF	186096LF
5	Motor bracket	P2001335	P2001318
5	Motor bracket - F construction	P2001360	P2001359

* EPR/carbon/silicon-carbide

** FKM/carbon/silicon carbide

*** Graphite/silicon-carbide

† Jam nut kit must be purchased with all replacement impellers

Motor selection chart

HP	1-Phase 1800 RPM	3-Phase 1800 RPM	1-Phase 3600 RPM	3-Phase 3600 RPM	1-Phase smart motor	3-Phase smart motor
¼	SM2093	—	—	—	—	—
⅓	SM2094	—	—	—	—	—
½	SM2081	SM2108	—	—	—	—
¾	SM2083	SM2109	—	—	—	—
1	SM2097	SM2110	—	—	—	—
1½	SM2087	SM2111	—	—	—	—
2	—	—	SM2088	SM2105	107239630NR	107239940NR
3	—	—	SM2089	SM2106	—	107239920NR
5	—	—	—	SM2107	—	—

1.5AB pump parts

Parts common to both pump types

Item number	Description	Pump construction	
		Bronze fitted	All bronze
1	Volute	P57181	P2000046
10	Volute drain plug (6)	P39020	P39470
8	Volute capscrew (8)	P40020	P40020
2	Volute gasket	P57700	P57700
11	Flange (2)	P03410	P2004632
12	Flange gasket	P03350	P03350
6	Motor bracket capscrew (4)	P40020	P40020
4	Impeller (state diameter) †	P2003631	P2003631
3	Jam nut kit	P2004395	P2004395
9	Seal - std *	186094LF	186094LF
9	Seal - opt **	186095LF	186095LF
9	Seal - opt***	186096LF	186096LF
5	Motor bracket	P2001337	P2001339

* EPR/carbon/silicon-carbide

** FKM/carbon/silicon carbide

*** Graphite/silicon-carbide

† Jam nut kit must be purchased with all replacement impellers

Motor selection chart

HP	1-Phase 1800 RPM	3-Phase 1800 RPM
¼	—	—
⅓	—	—
½	SM2081	SM2108
¾	SM2083	SM2109
1	SM2097	SM2110
1½	SM2090	SM2111
2	SM2091	SM2112
3	—	—
5	—	—

2AB pump parts

Parts common to both pump types

Item number	Description	Pump construction	
		Bronze fitted	All bronze
1	Volute	P57278	P2000049
10	Volute drain plug (6)	P39020	P39470
8	Volute capscrew (8)	P40020	P40020
2	Volute gasket	P57700	P57700
11	Flange (2)	F14200	P2004634
12	Flange gasket	P03480	P03480
6	Motor bracket capscrew (4)	P40020	P40020
4	Impeller (state diameter)†	P2003632	P2003632
3	Jam nut kit	P2004395	P2004395
9	Seal - std *	186094LF	186094LF
9	Seal - opt **	186095LF	186095LF
9	Seal - opt***	186096LF	186096LF
5	Motor bracket	P2001337	P2001339

* EPR/carbon/silicon-carbide

** FKM/carbon/silicon carbide

*** Graphite/silicon-carbide

† Jam nut kit must be purchased with all replacement impellers

Motor selection chart

HP	1-Phase 1800 RPM	3-Phase 1800 RPM
¼	—	—
⅓	—	—
½	SM2083	SM2109
¾	SM2097	SM2110
1	SM2090	SM2111
1½	SM2091	SM2112
2	SM2092	SM2113
3	—	—
5	—	—

Xylem Product Cybersecurity

Xylem values your system security and the availability of your critical services.

For more information on Xylem cybersecurity practices or to contact the cybersecurity team please visit [Xylem.com/security](https://xylem.com/security).



Xylem Inc.
8200 N. Austin Avenue
Morton Grove, Illinois 60053

Tel.: +1 847.966.3700
Fax: +1 847.966.9052
xylem.com/bellgossett

**Learn more about
Series e-90 pumps**



All information presented herein is believed reliable and in accordance with accepted engineering practices. Xylem makes no warranties as to the completeness of this information. Users are responsible for evaluating individual product suitability for specific applications. Xylem assumes no liability whatsoever for any special, indirect or consequential damages arising from the sale, resale or misuse of its products. Subject to change without notice.

© 2025 Xylem Inc. or its affiliate. All rights reserved. Bell & Gossett is a trademark of Xylem or one of its subsidiaries. All other trademarks or registered trademarks are the property of their respective owners.

